

Great Linford Neighbourhood Development Plan North

Strategic Environmental Assessment Screening Statement Appropriate Assessment Screening

1. Introduction

1.1 What is the screening opinion?

1.2 This report has been produced to determine the need for a Strategic Environmental Assessment (SEA) in accordance with the European Directive 2001/42/EC and associated Environmental Assessment of Plans and Programmes Regulations 2004.

1.3 This document also addresses the need for Appropriate Assessment, in accordance with European Directive 92/43/EEC, commonly known as the Habitats Directive.

1.4 What is the Neighbourhood Plan trying to achieve?

1.5 The Great Linford Parish Neighbourhood Development Plan North covers the communities of Blakelands, Giffard Park, Great Linford and Redhouse Park. The parish encompasses a wide range of communities including established localities within a very attractive part of Milton Keynes; local centres and facilities which need to keep pace with changing local demographics, an area of new development which is still growing as a community.

1.6 The Plan, through its policies, aims to improve the quality of the area whilst not delaying sustainable development.

2. Policy context

2.1 The Development Plan for Milton Keynes currently comprises the Milton Keynes Local Plan (adopted December 2005), the Core Strategy (adopted July 2013) and the Woburn Sands Neighbourhood Plan.

2.2 The Council is currently at an early stage of preparing a new local plan for Milton Keynes (Plan:MK) which will replace and update both the Milton Keynes Local Plan and the core Strategy. Work is also underway on a Site allocations Plan which will bring forward smaller sites in the short to medium term to increase the amount of deliverable housing sites from those identified in the core Strategy.

2.3 Although the Neighbourhood Plan must be in general conformity with the strategic policies of the Local Plan and the Core Strategy, it can promote more development, but must not propose less. It will also provide a more local context to the non-strategic policies of the Local Plan. The Neighbourhood Plan will be subject to public consultation in accordance with the relevant regulations prior to its adoption.

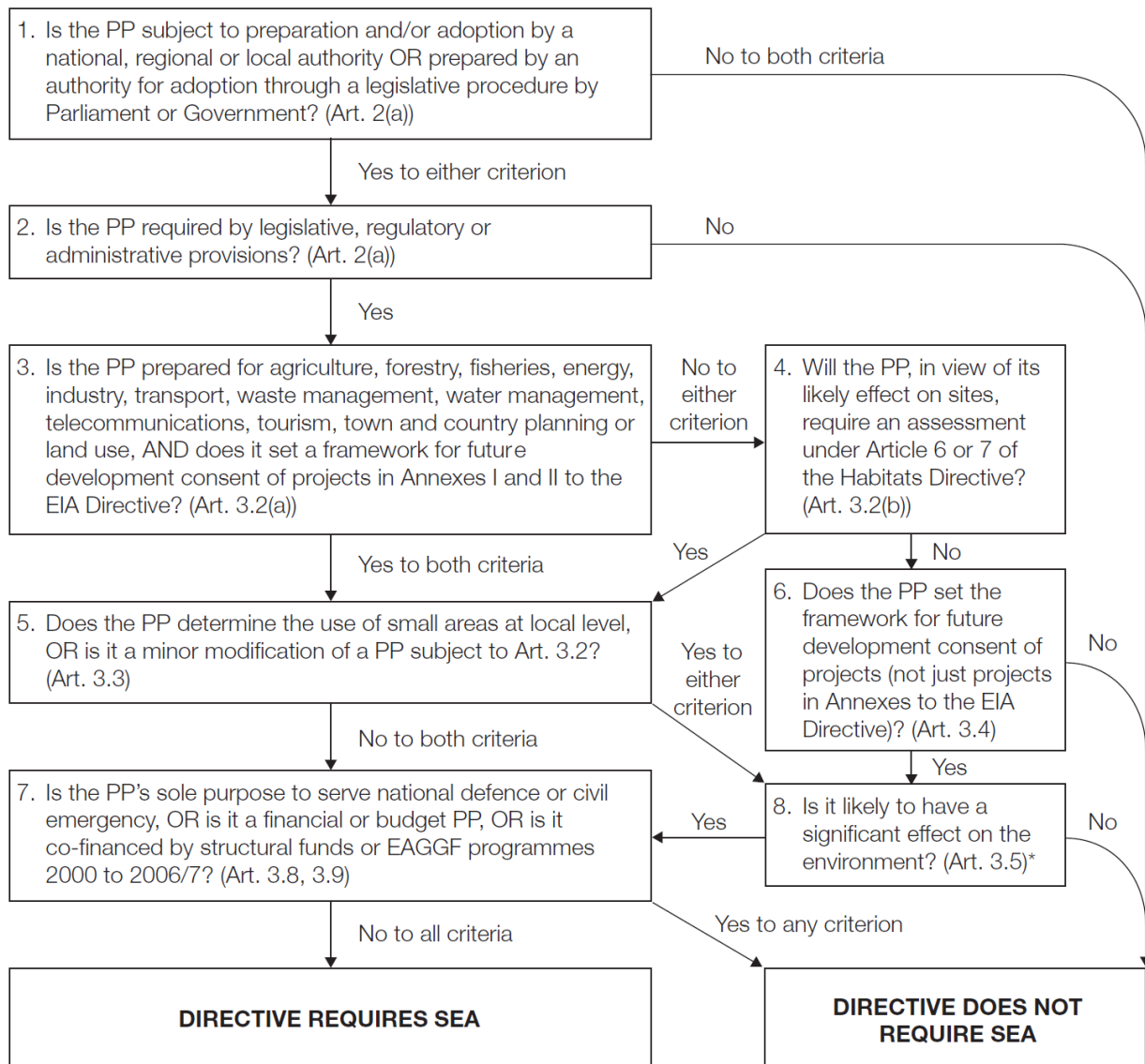
3. SEA Screening

3.1 The requirement for a Strategic Environment Assessment (SEA) is set out in the "Environmental Assessment of Plans and Programmes Regulations 2004". There is also practical guidance on applying European Directive 2001/42/EC produced by the ODPM (now DCLG)¹. These documents have been used as the basis for this screening report.

¹ A Practical Guide to the Strategic Environmental Assessment Directive (2005) (ODPM)

3.2 Neighbourhood Plans must be screened to establish whether or not they will require Strategic Environmental Assessment. The ODPM practical guidance provides a checklist approach based on the SEA regulations to help determine whether SEA is required. This guide has been used as the basis on which to assess the need for SEA as set out below.

Figure 1: Establishing the need for SEA



*The Directive requires Member States to determine whether plans or programmes in this category are likely to have significant environmental effects. These determinations may be made on a case by case basis and/or by specifying types of plan or programme.

Figure 2: Establishing the need for SEA of the Neighbourhood Plan

Stage	Answer	Reason
1. Is the SPD subject to preparation and/or adoption by a national, regional or local authority OR prepared by an authority for adoption through a legislative procedure by Parliament of Government? (Article 2(a))	Yes	It will be prepared by the Great Linford Parish Council and will be adopted by Milton Keynes Council under the 2012 Neighbourhood Planning Regulations.
2. Is the NP required by legislative, regulatory or administrative provisions? (Article 2(a))	Yes	Although there is no requirement to produce a Neighbourhood Plan, they are subject to formal procedures and regulations laid down by national government. In light of the European Court of Justice ruling in the Case C-567/10 it is considered that this means the NP is 'required'.
3. Is the SPD prepared for agriculture, forestry, fisheries, energy, industry, transport, waste management, water management, telecommunications, tourism, town and country planning or land use, AND does it set a framework for future development consent of projects in Annexes I and II to the EIA Directive? (Art. 3.2(a))	No	The NP is prepared for town and country planning purposes but does not explicitly set a framework for future development consent of projects in Annexes I or II of the EIA Directive.
4. Will the plan in view of its likely effect on sites, require an assessment under Article 6 or 7 of the Habitats directive?	No	The Core Strategy was screened and it was concluded that appropriate assessment was not required. The Neighbourhood Plan must be in general conformity with the Core Strategy and, although it can propose more development, it is unlikely to be significant enough to require assessment under the Habitats Directive.
6. Does the plan set the framework for future development consent of projects?	Yes	The Neighbourhood Plan will provide a framework for future development consent of projects in the area.
8. Is the SPD likely to have a significant effect on the environment?	See results of Figure 3: Determining the likely significance of effects	

Figure 3: Determining the likely significance of effects

SEA Directive Annex II: Criteria for determining likely significance of effects referred to in Article 3(5)		
Criteria	✓/✗	MKC Comment
<i>The characteristics of plans and programmes, having regard, in particular, to:</i>		
1a) The degree to which the plan or programme sets a framework for projects and other activities, either with regard to the location, nature, size and operating conditions or by allocating resources	✓	The NP will set a policy framework for the determination of planning applications for future development projects, in terms of location, nature and scale/ Once the Neighbourhood Plan has passed examination and its referendums, it will become part of the Development Plan for the area.
1b) The degree to which the plan or programme influences other plans and programmes including those in a hierarchy	✓	The NP will form part of the statutory development plan for MK. It is influenced by the Core Strategy but may influence the preparation of future local plans for the area such as Plan MK.
1c) The relevance of the plan or programme for the integration of environmental considerations in particular with a view to promoting sustainable development	✓	The achievement of sustainable development in one of the basic conditions that a Neighbourhood Plan must meet. The Neighbourhood Plan aims to improve the quality of the area whilst not delaying sustainable development.
1d) Environmental problems relevant to the plan or programme	✗	It is not considered that there are any particular environmental problems relevant to the plan.
1e) The relevance of the plan or programme for the implementation of Community legislation on the environment (e.g. plans and programmes linked to waste-management or water protection).	✗	The SPD is unlikely to be directly relevant in regard to this criterion.
<i>Characteristics of the effects and of the area likely to be affected, having regard, in particular, to:</i>		
2a) The probability, duration, frequency and reversibility of the effects	x	Overall the effects of the plan on SEA topics are considered to be neutral. Where new development might have a negative effect this will be reasonably long term, although the effect is potentially reversible as redevelopment can occur.
2b) The cumulative nature of the effects	x	The effects of the Neighbourhood Plan needs to be considered alongside the Core Strategy however it is not considered that the neighbourhood plan introduces significant additional effects over and above those already considered in the SA for the Core Strategy.

		Given that the whole borough could potentially be covered by neighbourhood plans, each promoting policies and development, there could be a significant cumulative impact of multiple neighbourhood plans although as plans cannot overlap, their impact would be limited to the area that they cover.
2c) The trans-boundary nature of the effects	x	Given the issues and policies in the plan, it is not considered to have any effect beyond the Milton Keynes Council boundary. Indeed its effects will essentially be limited to the parish area.
2d) The risks to human health or the environment (e.g. due to accidents)	x	The Neighbourhood Plan does not require development to take place, it encourages and sets out policies to guide development. Its impact on human health is considered to be limited and it is not likely to have a significant impact on the environment due to accidents.
2e) The magnitude and spatial extent of the effects (geographical area and size of the population likely to be affected)	x	Given the issues and policies in the plan, it is not considered to have little beyond very local effects.
2f) The value and vulnerability of the area likely to be affected due to: I. special natural characteristics or cultural heritage, II. exceeded environmental quality standards or limit values III. intensive land-use	x	The NP is essentially seeking to protect the existing environment whilst allowing appropriate sustainable development.
2g) The effects on areas or landscapes which have a recognised national, Community or international protection status	x	There are no areas or landscapes with these designations in Milton Keynes.

4. SEA Conclusion

4.1 The Great Linford Parish Neighbourhood Plan North will provide a planning policy framework to be used when considering planning applications in the Neighbourhood Area.

4.2 The Plan's effects are unlikely to have any significant impacts beyond the Neighbourhood Area beyond the plan boundary and it is considered that overall the plan will not have significant effects on the environment. It is, therefore, concluded that the Great Linford Parish Neighbourhood Plan North does not need to be subject to Strategic Environmental Assessment.

5. Appropriate Assessment (AA) Screening

- 5.1 Legal protection is afforded to habitats and species of European importance through Directive 92/43/EEC on the Conservation of Natural Habitats and Wild Flora and Fauna - known as the 'Habitats Directive'. Articles 6(3) and 6(4) of the Habitats Directive require AA of plans to be undertaken. This involves assessing the contents of plans to ensure that their policies and proposals maintain the integrity of Natura 2000 sites. The assessment must determine whether the plan would adversely affect the nature conservation objectives of each site. Where negative effects can be identified, other options should be examined to avoid any potential damaging effects.
- 5.2 The application of the precautionary principle through the Habitats Directive means that plans can only be permitted once it is shown that there will be no adverse effect on the integrity of any Natura 2000 sites. In the rare case of there being no alternatives available or over-riding reasons of public interest why a plan needs to be implemented, plans that do have negative impacts may still be approved.

6. Appropriate Assessment Conclusion

- 6.1 Given the role of Neighbourhood Plans and lack of any development being proposed in the Great Linford Parish Neighbourhood Plan North, it is considered that Appropriate Assessment of the plan is not required.

7. Consultation Outcome

- 7.1 The three statutory bodies for the purposes of SEA Screening are English Heritage, the Environment Agency and Natural England, these three bodies were consulted on the screening opinion and responses were received from the Environment Agency and Natural England.
- 7.2 The Environment Agency agreed with the conclusion in the screening opinion that an SEA is not required for this Neighbourhood Plan.
- 7.3 Natural England confirm that, based on the information provided, the proposals contained within the plan will not have significant effects on sensitive sites that Natural England has a statutory duty to protect. Additionally, as the Neighbourhood Plans for both the Great Linford Parish North and South do not contain any proposed development there is no need for an Appropriate Assessment. Natural England recommended the removal of Section 6 of the draft screening opinion as it holds no bearing on the Neighbourhood Plan. Accordingly, that section has been deleted in this final screening statement.
- 7.4 This finalised Screening Statement will now be published on the Milton Keynes Council website.

8. Contact

Further information can be obtained from:

Development Plans
Planning and Transport
Civic Offices
1 Saxon Gate East
Central Milton Keynes
MK9 3EJ

W: www.milton-keynes.gov.uk/planning-policy

T: 01908 252599

E: development.plans@milton-keynes.gov.uk