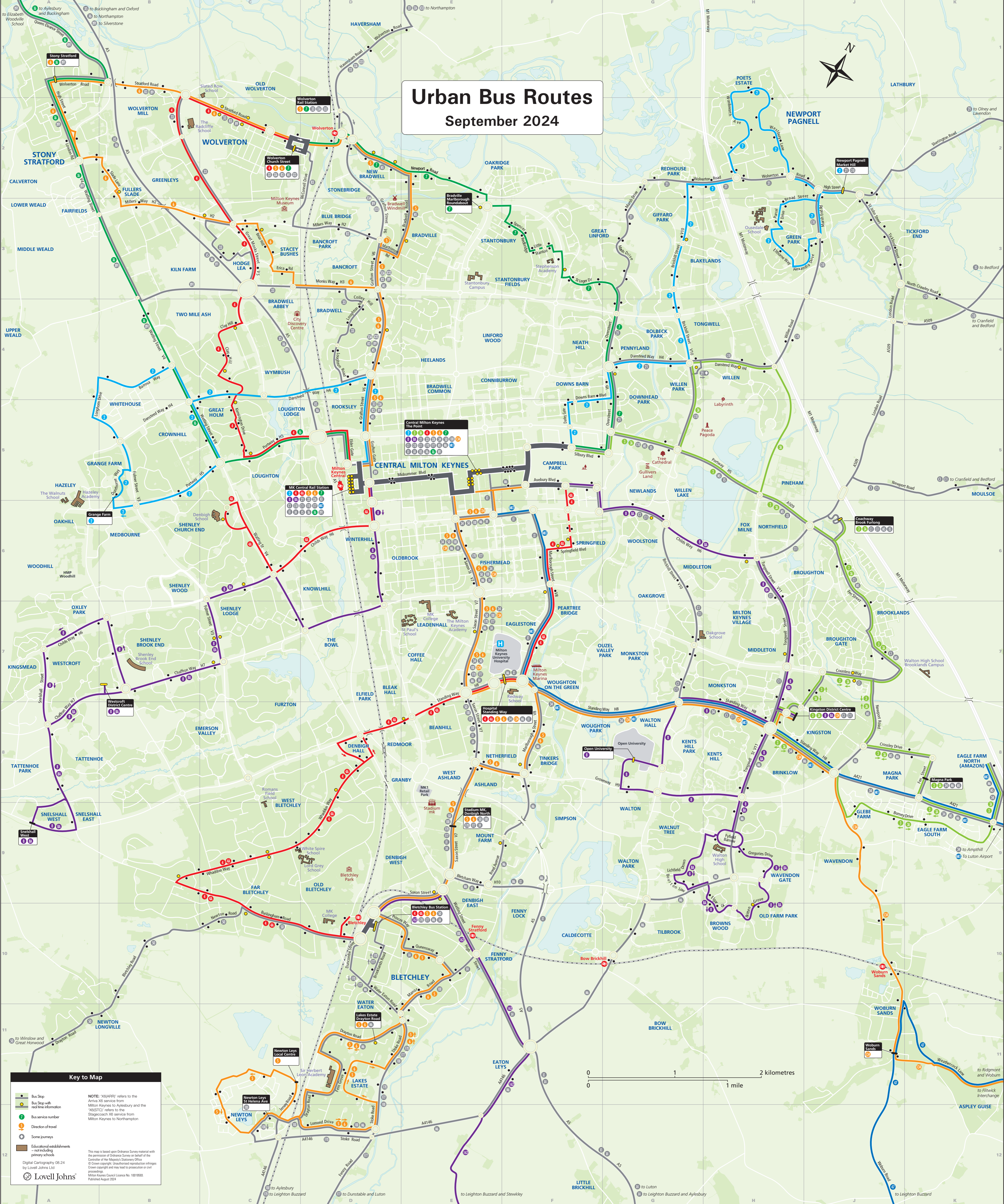


Urban Bus Routes

September 2024



Key to Map

- Bus Stop
- Bus Stop with real-time information
- Bus service number
- Direction of travel
- Some journeys
- Educational establishments (not including primary schools)

This map is based on Ordnance Survey material with the permission of Ordnance Survey on behalf of the Controller of the Map. © Crown copyright. Unauthorised reproduction is illegal. Milton Keynes Council License No. 10018960. Published August 2024.

INDEX TO PLACES SERVED

Grid	Destination	Service	Grid	Destination	Service	Grid	Destination	Service	Grid	Destination	Service	Grid	Destination	Service
E8	Ashland	5, 6, 100, F70, F77, M6, X4	E7	Coffee Hall	4, 4A, 5, 6, 34, 50, 100, 134, F70, F77, M6, X4	E4	Heelands	5, 6, 33A, X33	G2	Redhouse Park	2, 21	C8	West Bletchley	4, 4A
D3	Bancroft	2, X6(ARR)	B5	Crownhill	5, 6, 33/33A	C3	Hodge Lea	2, X6(ARR)	K5	Moulsoe	4, 6	E8	Westcroft	8, 8A
E8	Beanhill	4, 4A, 50, 100, F70, F77, X4	E10	Denbigh East	5, 6, X4	G8	Kents Hill	8, 8A	E9	Mount Farm	5, 6, 50, 100,	D5	Rooksley	2, 5, 6, 33/33A, X33
G3	Blakelands	2, 21	G4	Downhead Park	2, 7, 21	B3	Kiln Farm	F70, F77, M6, X1	B7	Shenley Brook End	8, 8A	H4	Willen Park	3A, 21
D7	Bleak Hall	2, 7, 21	F4	Downs Barn	2, 7, 21	H8	Kingston	3, 8, 8A, 34, 450, C1, C11, MK1	B6	Shenley Church End	2, 4A, 8, 8A	J11	Willen Park	2, 3, 3A, 21
D10	Bletchley	4, 4A, 5, 6, 50, F70, F77, M6, X4	F7	Eaglestone	4, 4A, 5, 6, 34, 50, 100, F70, F77, X1, X4	D6	Knowhill	4A, 8, 8A	C7	Shenley Lodge	8, 8A	G11	Woburn Sands	134
G3	Blue Bridge	M6	F11	Eaton Leys	M6	D11	Lakes Estate	5, 6, 100, F70, F77, M6, X4	F6	Springfield	4, 4A	C2	Wolverton	4, 5, 6, 7, 33/33A, 89, X33
E4	Bolbeck Park	2, 21	C8	Emerson Valley	8, 8A	E7	Leadenhall	5, 6, 34, 50, 100, 134	C3	Stacey Bushes	4, 6, 33	G6	Woolstone	8, 8A, C1, C10, C11
E3	Bradville	5, 7, 33A, X33	C5	Great Holm	2, 4, X6(ARR)	D2	New Bradwell	M6, F70, F77, X4	E8	Stadium MK (MK Dons FC)	5, 6, 50, 100,	B4	Two Mile Ash	2, 4
D4	Bradwell	5, 6, 33A, X33	B9	Far Bletchley	4, 4A, 50	C5	Loughton	2, 4, 8, 8A, X6(ARR)	J2	Newport Pagnell	2, 21, C10			
E4	Bradwell Common	5, 6, 33A, X33	F10	Fenny Stratford	M6	C8	Loughton Lodge	2, 4, 8, 8A, X6(ARR)	C12	Newton Leys	6, 100	E3	Stantonbury	7
H8	Brinklow	3, 3A, 8, 8A, 34, M6	E10	Fenny Stratford	4, 4A, 5, 6, 5, 6, 100, X4	J8	Magna Park	3, 3A, 8, 8A, M6	H6	Northfield	3, 3A, 8, 8A, C10	A2	Stony Stratford	6, X6(ARR), X91*
J6	Broughton	3, 3A, 8, 8A, C1, C11	E6	Fishermead	4, 4A, 5, 6, 34, 50, 100, X4	G6	Oakgrove	C1, C11	G6	Oakgrove	C1, C11	J3	Tickford End	C10
J7	Broughton Gate	3, 3A, C1, C11	H6	Fox Milne	8, 8A	H7	Old Farm Park	8, 8A	H10	Old Farm Park	5, 6, M6	F8	Tinkers Bridge	5, 6, M6
H10	Browns Wood	8, 8A, M6	B2	Fullers Slade	6	E2	Oakridge Park	7	H4	Tongwell	2, 3A, 21	H4	Tongwell	2, 3A, 21
F5	Campbell Park	2, 3, 3A, 4, 7, 21, C1, C10, C11	G3	Giffard Park	2, 21	E6	Oldbrook	3, 3A, 5, 6, 34, 50, 100,	G9	Walnut Tree	8, 8A, M6	G9	Walton	8
E5	Central Milton Keynes	2, 3, 3A, 4, 4A, 5, 6, 7, 8, 8A, 21, 33/33A, 34, 50, 89, 134, C1, C10, C11, F70, F77, X1, X4, X5, X6(ARR), X6(STC), X33, X91	F3	Great Linford	2, 21	G8	Open University	8	G9	Walton Park	8	G9	Walton Park	8
J6	Coachway	3, 3A, C1, C11, X5	H3	Green Park	2, C10	F7	Peartree Bridge	4	D11	Water Eaton	5, 6, 100, F70, F77, M6	D11	Water Eaton	5, 6, 100, F70, F77, M6
			B2	Greenleys	4, 6	G4	Pennyland	2, 7, 21	J9	Wavendon	134	J9	Wavendon	134
			D1	Haversham	33/33A, X33	H7	Monkston	8, 8A, 34, C1, C11	H9	Wavendon Gate	8, 8A, M6	H9	Wavendon Gate	8, 8A, M6

KEY
*school journeys only