



Milton Keynes City Council Plan. 2022-2026



How we'll deliver a thriving, inclusive and sustainable city for everyone

15 June 2022
Updated May 2024

Purpose of the Council Plan

The Council Plan sets out how Milton Keynes City Council will deliver our Strategy for 2050, as agreed by Milton Keynes City Council on 20th January 2021.

The Strategy for 2050 is our long-term vision for the city and the future, seeking to ensure that everyone in Milton Keynes can lead happy, healthy lives.

The Council Plan sets out the corporate priorities for the period between 2022 to 2026 as we continue to deliver the ambitious goals set out in the Strategy for 2050, alongside an annual delivery plan on specific policies and tasks.

“Making our city a better place to live”



Vision

Milton Keynes is the pinnacle of post-war planning and innovation.

Designed on the founding principle that each and every citizen has the right to a high quality of life through the provision of good-quality affordable housing, well paid employment and access to open space, our city is a unique and special place of character, innovation, and community.

Milton Keynes City Council is committed to strengthening and enhancing the qualities that make us special while ensuring we are ambitious for the next chapter in our history as an internationally recognised economic powerhouse, centre of innovation and cultural creativity, and pioneer of high-quality sustainable growth.

Milton Keynes City Council is ambitious for all, ensuring everybody has opportunities to fulfil their potential by delivering the best services and support we can while ensuring the change needed to tackle climate change and meeting the challenges of recovering from a global pandemic and a cost-of-living crisis.



Our Key Objectives

A thriving city

We will continue to improve our city as a unique regional and national economic powerhouse, with a growing cultural significance that builds on our success and innovates for the future.

An inclusive city

Everyone in Milton Keynes deserves to have the same opportunities and chances in life, where people are valued, feel safe and are encouraged to participate in their community and lead healthier, fulfilled lives.

A sustainable city

We will ensure that we grow sustainably and deliver value for money services that put tackling climate change at the heart of our actions.

Our Values

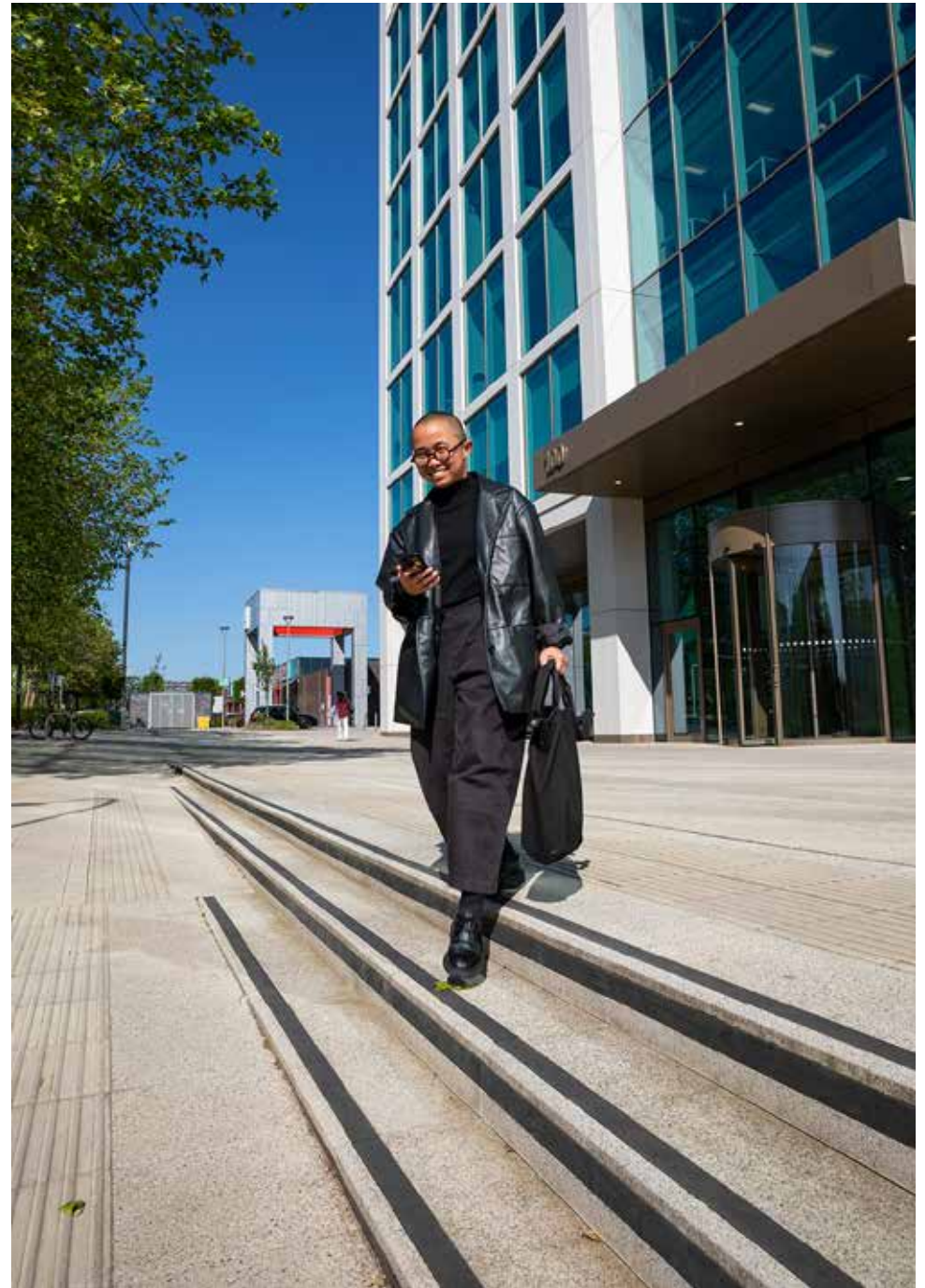
As an organisation, Milton Keynes City Council wants to set an example in our working practices and deliver excellence for our citizens.

We operate on the principles of a co-operative council and want to build partnerships with other public services, voluntary groups, charities and parish and town councils so that the services that our citizens value can continue to be delivered in a sustainable way into the future.

Outcomes we want to see by 2026

Milton Keynes City Council as an employer of choice

Milton Keynes City Council should be seen as an employer of choice where our employees reflect the diversity of our city and are respected and motivated to deliver the best services possible to the people and businesses of Milton Keynes.



Our Ten Principles

1

Ambitious in what we do

Ambition is part of the DNA of Milton Keynes. We strive to ensure that we stay true to the founding principles of the city, delivering for today and innovating for tomorrow so we can be a successful and fairer place.

2

Public service at its best

Milton Keynes City Council serves the public, businesses, and communities of Milton Keynes. We exist to ensure that we support people when they need it and transform lives through our commitment to public service and the dedication of those that work for us and our partners.

3

Meeting our financial challenges

The council is faced with significant financial challenges with continued national funding uncertainty, rising demand and increasing costs likely to mean a period of very difficult budget decisions and need for prioritisation to ensure a balanced budget.

Outcomes we want to see by 2026

Continued financial stability

Maintain a robust Medium Term Financial Strategy.

Manage our finances well.

Agree a balanced budget each year which is robust and contains appropriate resources to deliver our services and council plan priorities.

Ensure a general understanding by councillors, partners and the public of the financial challenges faced by the council.

Our Ten Principles

4 Value for money services

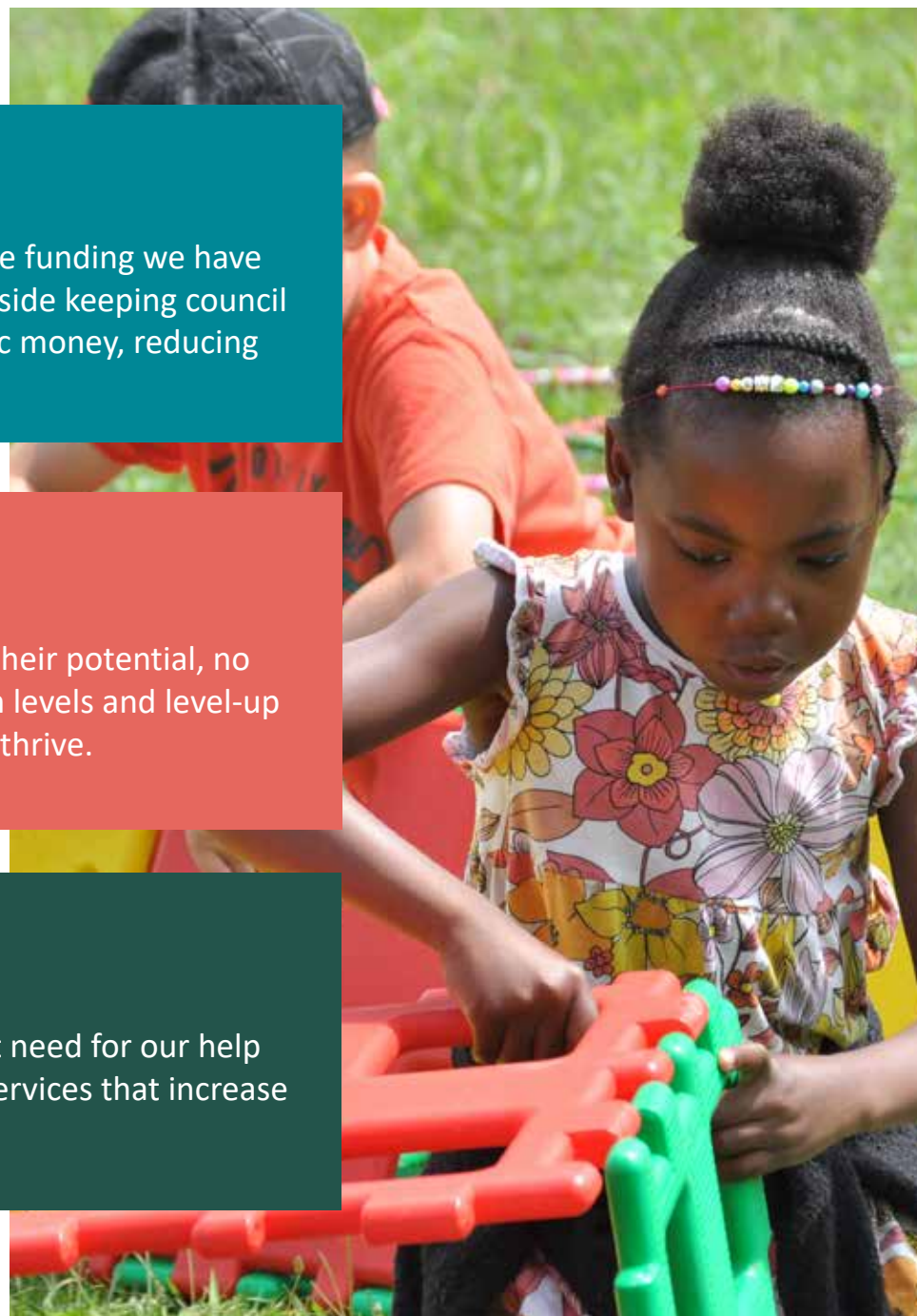
We will seek to deliver the best possible services with the funding we have available, managing the expectations of the public alongside keeping council tax as low as possible, ensuring the efficient use of public money, reducing waste and improving productivity.

5 Opportunity for all

Everyone deserves a fair and equal opportunity to fulfil their potential, no matter their background. We want to increase aspiration levels and level-up the chances people have in life to succeed, prosper, and thrive.

6 Supporting vulnerable people

We will prioritise supporting those who have the highest need for our help to protect them from harm or neglect, while providing services that increase independence and improve the quality of life for people.



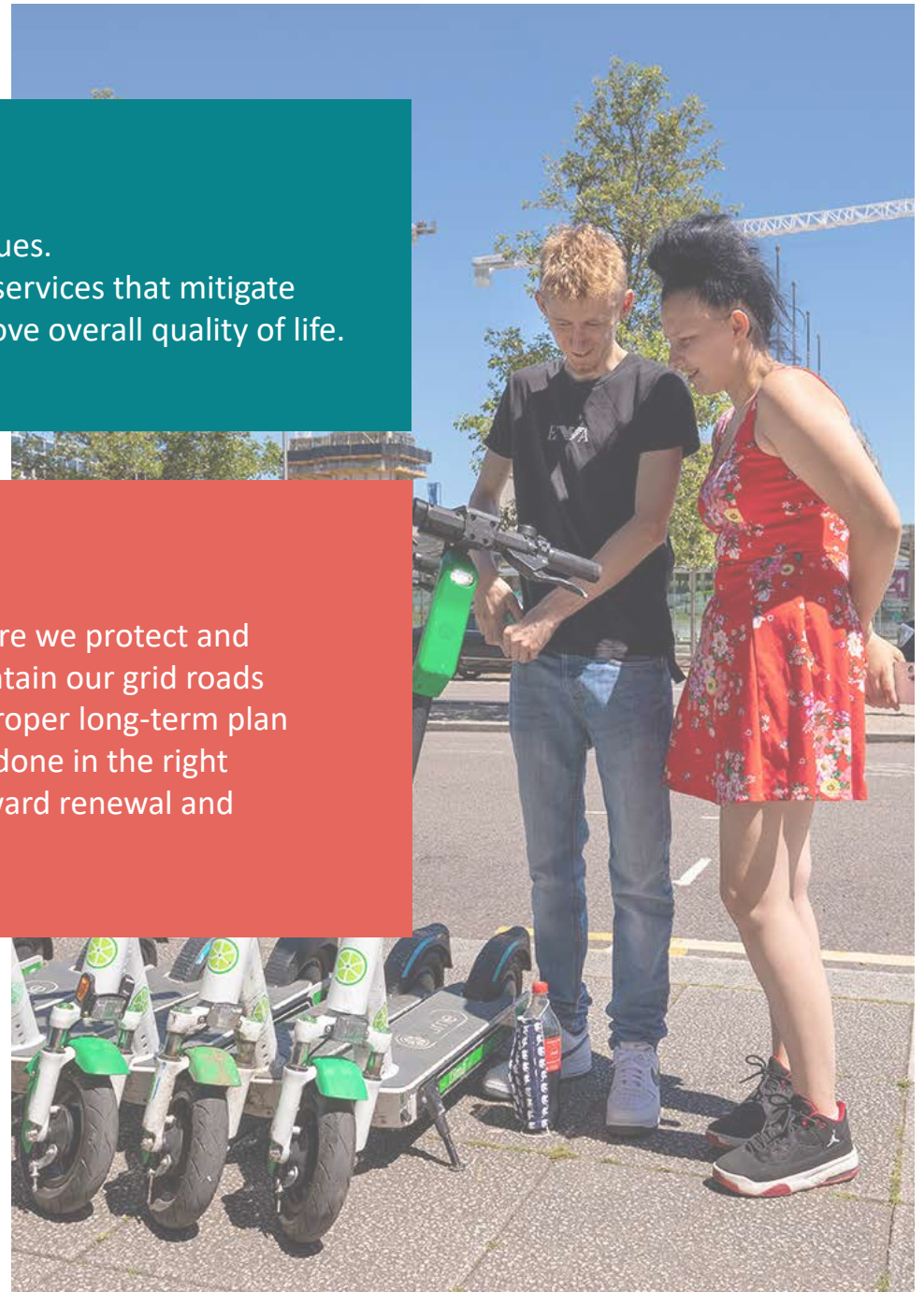
Our Ten Principles

7 Prevention is better than cure

We believe in tackling the root cause of problems and issues. We will maintain our focus on investment in actions and services that mitigate rising costs, improve lives over the longer-term and improve overall quality of life.

8 Well planned growth and renewal

Milton Keynes is unique. We are committed to making sure we protect and enhance what makes Milton Keynes special. We will maintain our grid roads and protect community green spaces. We will ensure a proper long-term plan for development that communicates clearly that growth done in the right way is essential and beneficial to our city, and brings forward renewal and improvements to our existing estates.



Our Ten Principles

Equality, diversity, and inclusion

9

Everyone should be able to live their best life, feel comfortable being themselves and free from discrimination regardless of their age, gender, sexual orientation, ethnicity, or disability background. We will work to recognise the issues people face, raise awareness and be challenging on the need for change.

Outcomes we want to see by 2026

A co-operative council that works well with partners

Our procedures, decisions and actions are open and transparent.

We will work co-operatively with our town and parish councils, VCSE organisations, partners and communities to involve them in the design and implementation of our actions.

We will promote, build and encourage community resilience and self-help.

We will improve our engagement and communication with our partners, businesses and the public.

Agree a devolution deal with our neighbouring councils and with government.

10

The importance of co-operation and partnerships

We understand that we are not able to meet the challenges we face and achieve the outcomes we want to see, develop the solutions we need or take the actions needed on our own. We will work with all our partners and businesses, communities and citizens on finding the best solutions to improving our city and lives, ensuring good governance and transparent decision making.

Our Key Priorities and Outcomes

A diverse and inclusive economy

Milton Keynes has a global reputation as a centre of innovation and achievement. We will continue to ensure that the city is an economic powerhouse and growing cultural centre by creating the right conditions for a successful economy in Central Milton Keynes and beyond to attract inward investment and job creation, ensuring that our population has the right skills and aspirations to match the needs of employers, so that everyone can share and enjoy our success.

Outcomes we want to see by 2026

A strong and robust economy

- A high-tech, high-skill, high wage economy
- Better employment opportunities for those on low incomes and improved skills levels
- Help start-ups, support growing businesses, support and attract inward investment
- More employers paying the Real Living Wage
- Support independent businesses on our vibrant high streets and local centres

High quality placemaking

- A dynamic and vibrant Milton Keynes city centre, that is resilient and adaptable to changing economic behaviour
- An improved gateway and public realm at Station Square
- Use East-West Rail and the Town Deal to leverage investment and support regeneration of Bletchley town centre
- A regenerated Wolverton town centre with a completed Agora redevelopment
- Develop plans for an in-person undergraduate university in CMK

A centre of culture and creativity

- Continue the success of the Milton Keynes International Festival
- Host and attract a range of local, national and international prominent arts, cultural and sporting events
- Support a fully realised training ground and academy facility for MK Dons
- Increase visitor and tourist numbers to Milton Keynes and our attractions
- Continued importance of Milton Keynes as a centre of Formula 1 and motorsport investment

Decent, affordable, homes in a high-quality environment

Milton Keynes was established as an ambitious project to meet the urgent housing crisis of the time. That foundation and continuing vision is under threat from increasing unaffordability, national planning regulations and underinvestment. We will seek to increase the supply of genuinely affordable housing, improve the mix of housing available to rent and buy, alongside improving and investing in our existing communities and housing through renewal and regeneration.

Outcomes we want to see by 2026

Improved access to affordable housing

- Ensure a supply of new homes to meet demand
-
- Increase the supply of genuinely affordable housing
-
- Build more council and social housing
-
- Seek to prevent and provide appropriate levels of support for homelessness and eliminate rough sleeping
-

Delivery of regeneration and renewal

- Complete Phase A of the Lakes Estate regeneration
-
- Progress work on regeneration scheme for Galley Hill & Fullers Slade
-
- Developed plans and started delivery of renewal in Bradville and Woughton
-
- Continue investment in planned maintenance to bring more homes to higher standards
-
- Developed and delivering plans for Mellish Court and the Gables

Well planned growth

- An agreed new local plan
-
- A successful planning academy supplying and retaining high-quality planning professionals
-
- Appropriate infrastructure to meet the increased demand through growth and holding developers to account for timely delivery
-
- Protected and enhanced grid roads and community green spaces
-
- Timely and appropriate enforcement activity
-
- Improved communication on the benefits of growth and the role and limitations of the local planning authority

Tackling social inequalities

Not all communities are able to benefit from the success of Milton Keynes and share in the high-quality of life others enjoy. Everyone deserves an equal chance and opportunity to fulfil their potential and live their best life in an inclusive environment. The impact of the Covid-19 pandemic and the cost-of-living crisis will make these challenges harder, but we are committed to improving the aspirations and outcomes for our young people, supporting those who need it and creating a fairer Milton Keynes.

Outcomes we want to see by 2026

Excellent services for our children and young people

- Children and young people are safe from harm and neglect
- Improved recruitment and retention of social workers and reduced use of agency staff
- Excellent fostering and adoption services
- A good local school place for every child with all schools working co-operatively to increase standards and attainment
- Appropriate provision of SEND placements

Mitigating the rise in child poverty and the impact of the cost-of-living crisis

- Families are supported by a network of children and family centres
- The number of children living in poverty is kept to a minimum
- Support to reduce the impact of rising energy and food bills
- Provide summer and school holiday food support and activities for children
- Work with partners who provide help and support to those who need it

A more equal, diverse and inclusive Milton Keynes that welcomes and supports everyone

- Reduce violence against women and ensure support for domestic abuse services
- Promote independence in older age and increase support for those with dementia
- Increase awareness of the issues faced by disabled people and improved levels of accessibility
- A safe, welcoming and supportive city for everyone in our LGBTQI+ communities
- Work with our diverse ethnic minority communities to reduce prejudice, racial discrimination and unconscious bias in services and wider society
- Provide suitable support to members of our Armed Forces, their families and veterans

Supporting cleaner, safer and healthier communities

We want all our neighbourhoods to be safe, inclusive and welcoming places for everyone whatever their background. We take pride in our local communities and will work with local people and partners to improve how clean and tidy our estates are, and to ensure people feel safe and secure in every part of the city. Cleaner and safer environments are a key part of healthier communities and we will also work with local people and partners to improve the health and wellbeing of local people.

Outcomes we want to see by 2026

Do the essentials well

- Provide the best quality open and accessible services we can for the level of resources available
- Protect services from cuts and innovate new ways of delivery
- Well maintained highways and infrastructure
- Ensure appropriate services and facilities for new communities
- Mitigate the impact of inflation on services

A cleaner and safer MK

- Improved appearance and pride in our local estates
- Cleaner neighbourhoods with increased levels of community activity
- Increased youth activities for younger people
- Appropriate level of resources for the police and justice system in our growing city
- Reduced knife crime

Improve health and wellbeing

- Increase integration of health and social care services with our partners on the MK Health and Care Partnership and the BLMK Integrated Care Board.
- Improved access to GP and mental health services
- Provide appropriate levels of good quality social care services
- Reduced health inequalities, especially in ethnic minority communities and for those on low incomes
- Reduced obesity and levels of smoking and increased early diagnosis of diabetes and HIV

Action on climate change

We are committed to Milton Keynes becoming net zero by 2030 and a world-leading smart and sustainable city, leading innovation and change so that we mitigate the impact of climate change on our citizens, economy and communities. We will continue to pioneer new ways of working to reduce waste, increase recycling and reuse, promote a circular economy, reduce energy demand and ensure mobility for all through innovation and investment in greater use of sustainable transport methods.

Outcomes we want to see by 2026

The world's leading sustainable city

- Reduce MK City Council emissions to net zero by 2030 and continue our ambitious goal to make MK net zero
- Increase the biodiversity of our green spaces
- Decrease levels of waste and increased the reuse and recycling of resources
- Reduce water usage and improve water management
- Continue to be a world-leading Smart City

Sustainable public transport and mobility

- Improve the availability and affordability of public transport in Milton Keynes
- Support bus services and improve demand responsive transport
- Develop plans for a Mass Rapid Transport System for Milton Keynes
- Increase journeys made by walking and cycling and investment in improving our redways to reduce car usage
- Support the speedy transition to electric vehicles

Mitigate the impact of climate change

- Improve the energy efficiency of local housing
- Development of local renewable and low carbon heat and power generation schemes
- Expand our carbon capture capacity through green roofs and afforestation
- Reduce as much as possible the harm caused by increasing instances of flooding
- Promote more sustainable land uses

Delivering the plan and measuring its success

The Council will set out a Delivery Plan to be approved by Full Council on an annual basis. This will form the work programme for that year to deliver the Council Plan and our objectives.

Every quarter, we publish 180 comprehensive performance indicators that explain how well we are delivering the Council Plan.

You can find these at: www.milton-keynes.gov.uk/council-plan

The image shows a stack of three performance indicator tables. The top table is titled 'Milton Keynes Council 2022/23 (Draft) - Key Indicators'. It features a grid with columns for various indicators and rows for different categories. A vertical column of cells is highlighted in green and yellow, representing performance levels. The tables are slightly offset to show multiple copies.



This page is intentionally blank

 **Milton Keynes City Council**