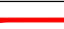
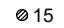






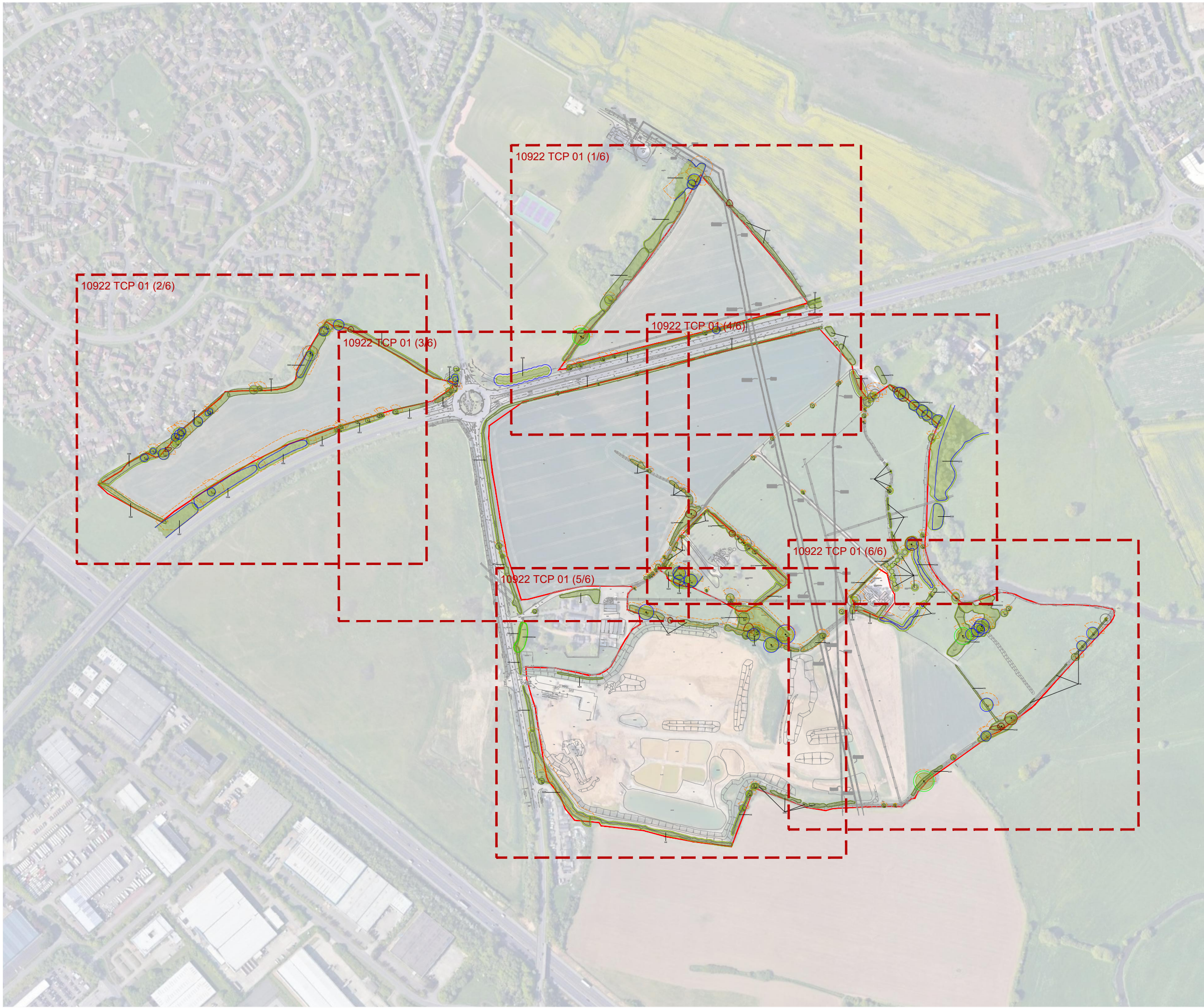


KEY:

-  Site Boundary
-  Tree Numbers
-  Tree Canopies
-  Category 'U' Trees
-  Category 'A' RPA
-  Category 'B' RPA
-  Category 'C' RPA
-  Shading Arc

Note: Trees 1-8, 10, 11, 13, 15, 22, 24, 28-41, 45, 46, 49, 52, 54-60, 62-64, 66-70, 72-75, 81, 84-87, 89-92, 102-106, 112-137, Groups G1, G7, G10, G12, G13, G15, G19, G36, G43, G52-G63, parts of Groups G5, G6, G9, G14, G21, G22, G24-G26, G45-G48 and Hedgerow H8 have been plotted using measurements onsite in conjunction with aerial imagery. Their locations were not recorded on the topographical survey of the site.

Note: The RPA footprint for Trees 29, 30, 110 and Groups G12-G14 & G33 have been displaced to allow for the effect of the adopted highway and existing watercourse. The surface area of the RPA has not been reduced.



Cited from Google Earth

REV	DATE	NOTE	Drawn	Chk'd

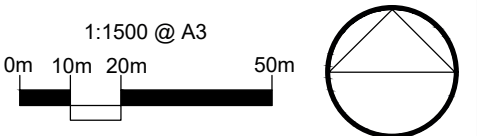
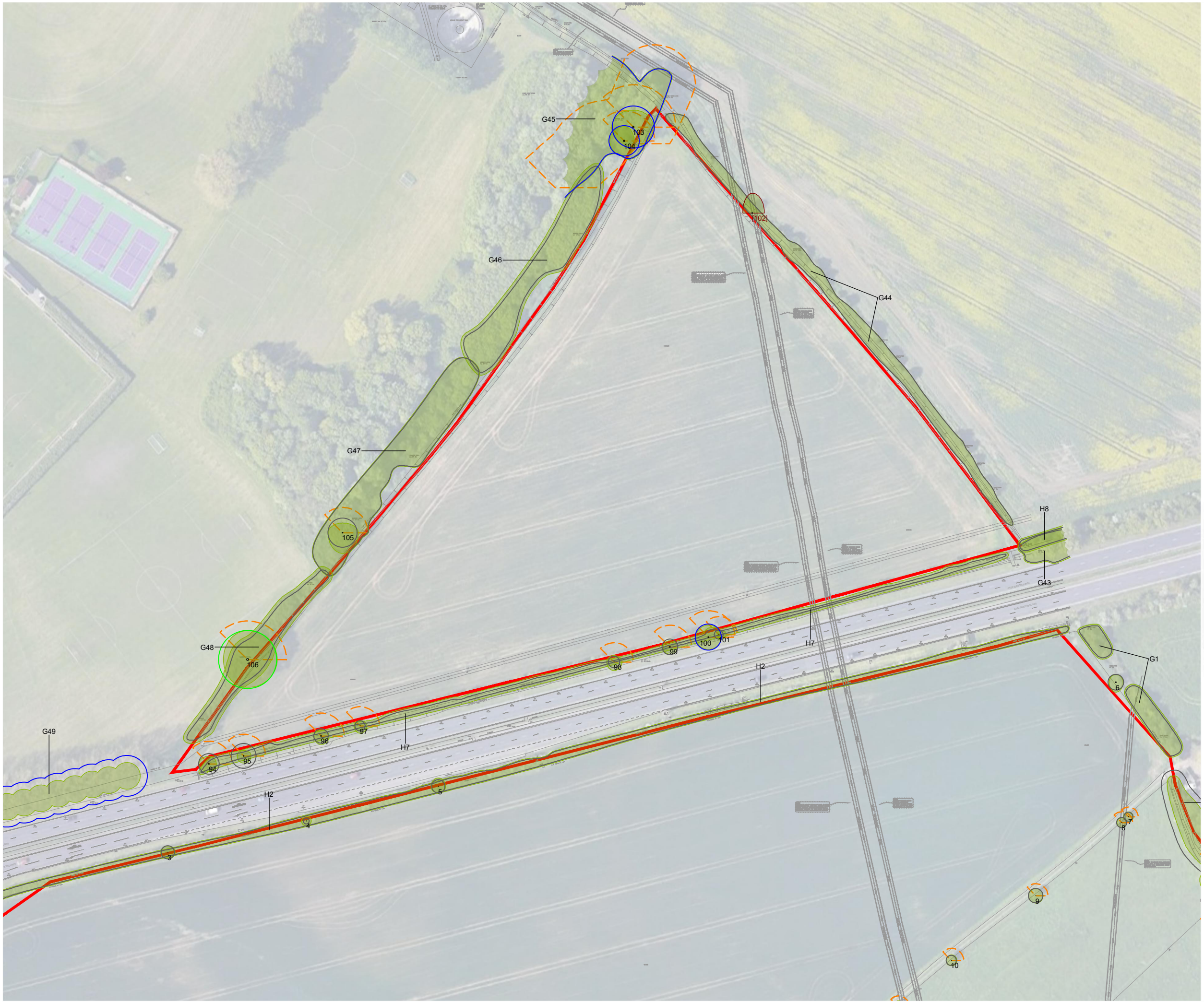


TITLE
**Land North and South of A422
 Newport Pagnell
 Tree Constraints Plan**

CLIENT
Bloor Homes South Midlands

SCALE Not to scale	DATE MAY 2021	DRAWN GW
DRAWING NUMBER 10922 TCP 01 (Overview)	REVISION	

Based on: 28389.dwg



- KEY:**
- Site Boundary
 - Tree Numbers
 - Tree Canopies
 - Category 'U' Trees
 - Category 'A' RPA
 - Category 'B' RPA
 - Category 'C' RPA
 - Shading Arc

Note: Trees 1-8, 10, 11, 13, 15, 22, 24, 28-41, 45, 46, 49, 52, 54-60, 62-64, 66-70, 72-75, 81, 84-87, 89-92, 102-106, 112-137, Groups G1, G7, G10, G12, G13, G15, G19, G36, G43, G52-G63, parts of Groups G5, G6, G9, G14, G21, G22, G24-G26, G45-G48 and Hedgerow H8 have been plotted using measurements onsite in conjunction with aerial imagery. Their locations were not recorded on the topographical survey of the site.

Note: The RPA footprint for Trees 29, 30, 110 and Groups G12-G14 & G33 have been displaced to allow for the effect of the adopted highway and existing watercourse. The surface area of the RPA has not been reduced.



Cited from Google Earth

REV	DATE	NOTE	Drawn	Chk'd

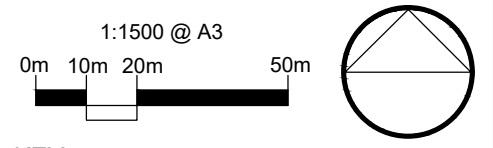


TITLE
**Land North and South of A422
 Newport Pagnell
 Tree Constraints Plan**

CLIENT
Bloor Homes South Midlands

SCALE 1:1500 @ A3	DATE MAY 2021	DRAWN GW
DRAWING NUMBER 10922 TCP 01 (1/6)		REVISION

Based on: 28389.dwg



- KEY:**
- Site Boundary
 - Tree Numbers
 - Tree Canopies
 - Category 'U' Trees
 - Category 'A' RPA
 - Category 'B' RPA
 - Category 'C' RPA
 - Shading Arc

Note: Trees 1-8, 10, 11, 13, 15, 22, 24, 28-41, 45, 46, 49, 52, 54-60, 62-64, 66-70, 72-75, 81, 84-87, 89-92, 102-106, 112-137, Groups G1, G7, G10, G12, G13, G15, G19, G36, G43, G52-G63, parts of Groups G5, G6, G9, G14, G21, G22, G24-G26, G45-G48 and Hedgerow H8 have been plotted using measurements onsite in conjunction with aerial imagery. Their locations were not recorded on the topographical survey of the site.

Note: The RPA footprint for Trees 29, 30, 110 and Groups G12-G14 & G33 have been displaced to allow for the effect of the adopted highway and existing watercourse. The surface area of the RPA has not been reduced.



Cited from Google Earth

REV	DATE	NOTE	Drawn	Chk'd

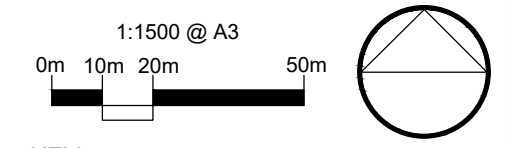


TITLE
**Land North and South of A422
 Newport Pagnell
 Tree Constraints Plan**

CLIENT
Bloor Homes South Midlands

SCALE 1:1500 @ A3	DATE MAY 2021	DRAWN GW
DRAWING NUMBER 10922 TCP 01 (2/6)		REVISION

Based on: 28389.dwg



- KEY:**
- Site Boundary
 - 15 Tree Numbers
 - Tree Canopies
 - Category 'U' Trees
 - Category 'A' RPA
 - Category 'B' RPA
 - Category 'C' RPA
 - Shading Arc

Note: Trees 1-8, 10, 11, 13, 15, 22, 24, 28-41, 45, 46, 49, 52, 54-60, 62-64, 66-70, 72-75, 81, 84-87, 89-92, 102-106, 112-137, Groups G1, G7, G10, G12, G13, G15, G19, G36, G43, G52-G63, parts of Groups G5, G6, G9, G14, G21, G22, G24-G26, G45-G48 and Hedgerow H8 have been plotted using measurements onsite in conjunction with aerial imagery. Their locations were not recorded on the topographical survey of the site.

Note: The RPA footprint for Trees 29, 30, 110 and Groups G12-G14 & G33 have been displaced to allow for the effect of the adopted highway and existing watercourse. The surface area of the RPA has not been reduced.



Cited from Google Earth

REV	DATE	NOTE	Drawn	Chk'd
REVISIONS				

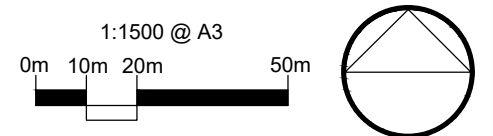
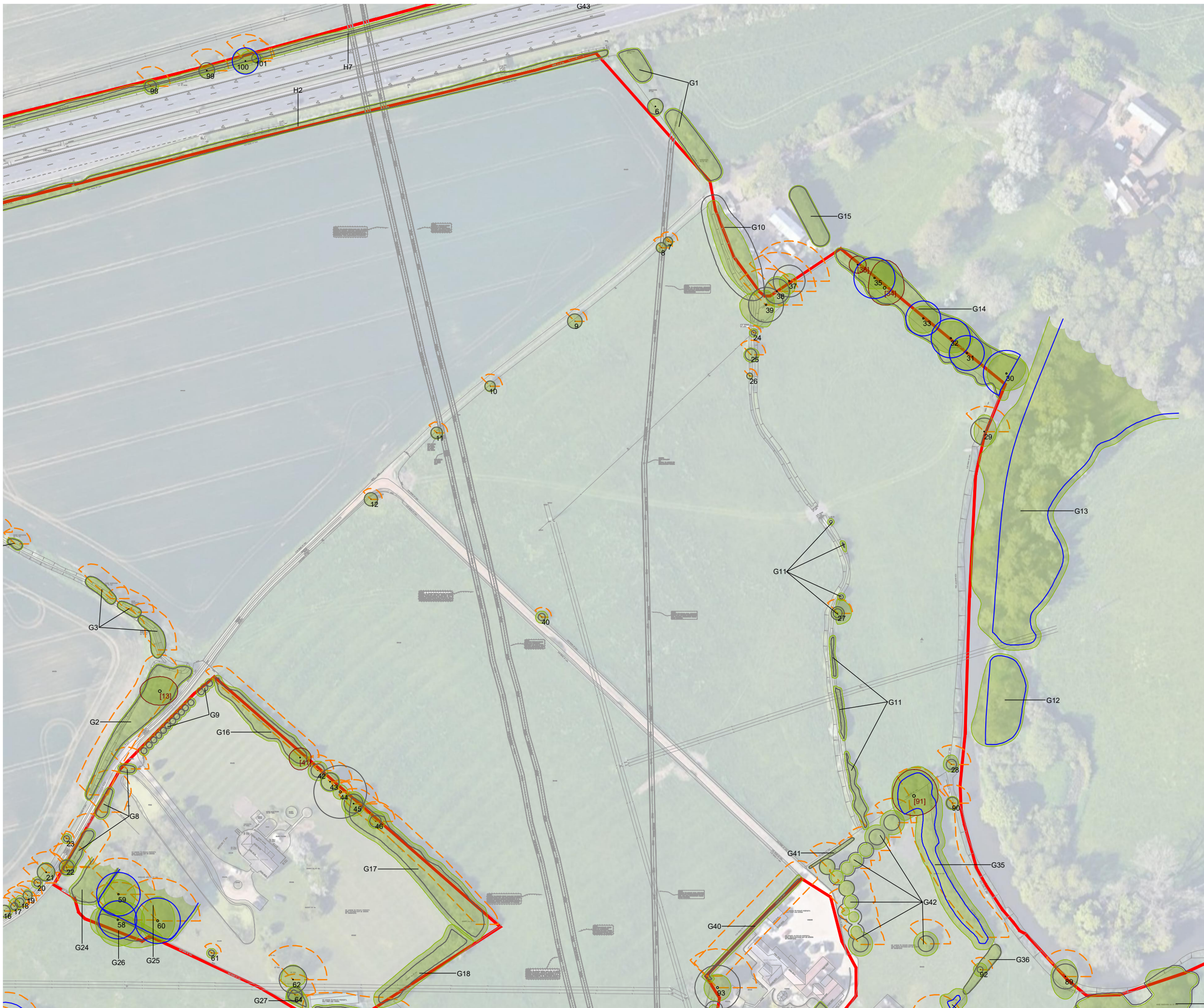


TITLE
**Land North and South of A422
 Newport Pagnell
 Tree Constraints Plan**

CLIENT
Bloor Homes South Midlands

SCALE 1:1500 @ A3	DATE MAY 2021	DRAWN GW
DRAWING NUMBER 10922 TCP 01 (3/6)		REVISION

Based on: 28389.dwg



- KEY:**
- Site Boundary
 - 15 Tree Numbers
 - Tree Canopies
 - Category 'U' Trees
 - Category 'A' RPA
 - Category 'B' RPA
 - Category 'C' RPA
 - Shading Arc

Note: Trees 1-8, 10, 11, 13, 15, 22, 24, 28-41, 45, 46, 49, 52, 54-60, 62-64, 66-70, 72-75, 81, 84-87, 89-92, 102-106, 112-137, Groups G1, G7, G10, G12, G13, G15, G19, G36, G43, G52-G63, parts of Groups G5, G6, G9, G14, G21, G22, G24-G26, G45-G48 and Hedgerow H8 have been plotted using measurements onsite in conjunction with aerial imagery. Their locations were not recorded on the topographical survey of the site.

Note: The RPA footprint for Trees 29, 30, 110 and Groups G12-G14 & G33 have been displaced to allow for the effect of the adopted highway and existing watercourse. The surface area of the RPA has not been reduced.



Cited from Google Earth

REV	DATE	NOTE	Drawn	Chk'd

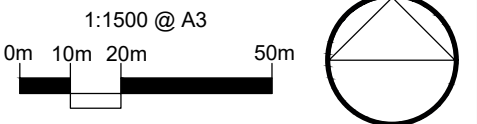


TITLE
**Land North and South of A422
 Newport Pagnell
 Tree Constraints Plan**

CLIENT
Bloor Homes South Midlands

SCALE	DATE	DRAWN
1:1500 @ A3	MAY 2021	GW
DRAWING NUMBER	REVISION	
10922 TCP 01 (4/6)		

Based on: 28389.dwg



- KEY:**
- Site Boundary
 - Tree Numbers
 - Tree Canopies
 - Category 'U' Trees
 - Category 'A' RPA
 - Category 'B' RPA
 - Category 'C' RPA
 - Shading Arc

Note: Trees 1-8, 10, 11, 13, 15, 22, 24, 28-41, 45, 46, 49, 52, 54-60, 62-64, 66-70, 72-75, 81, 84-87, 89-92, 102-106, 112-137, Groups G1, G7, G10, G12, G13, G15, G19, G36, G43, G52-G63, parts of Groups G5, G6, G9, G14, G21, G22, G24-G26, G45-G48 and Hedgerow H8 have been plotted using measurements onsite in conjunction with aerial imagery. Their locations were not recorded on the topographical survey of the site.

Note: The RPA footprint for Trees 29, 30, 110 and Groups G12-G14 & G33 have been displaced to allow for the effect of the adopted highway and existing watercourse. The surface area of the RPA has not been reduced.



Cited from Google Earth

REV	DATE	NOTE	Drawn	Chk'd

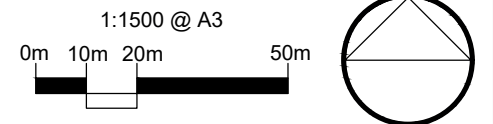


TITLE
**Land North and South of A422
 Newport Pagnell
 Tree Constraints Plan**

CLIENT
Bloor Homes South Midlands

SCALE 1:1500 @ A3	DATE MAY 2021	DRAWN GW
DRAWING NUMBER 10922 TCP 01 (5/6)		REVISION

Based on: 28389.dwg



- KEY:**
- Site Boundary
 - Tree Numbers
 - Tree Canopies
 - Category 'U' Trees
 - Category 'A' RPA
 - Category 'B' RPA
 - Category 'C' RPA
 - Shading Arc

Note: Trees 1-8, 10, 11, 13, 15, 22, 24, 28-41, 45, 46, 49, 52, 54-60, 62-64, 66-70, 72-75, 81, 84-87, 89-92, 102-106, 112-137, Groups G1, G7, G10, G12, G13, G15, G19, G36, G43, G52-G63, parts of Groups G5, G6, G9, G14, G21, G22, G24-G26, G45-G48 and Hedgerow H8 have been plotted using measurements onsite in conjunction with aerial imagery. Their locations were not recorded on the topographical survey of the site.

Note: The RPA footprint for Trees 29, 30, 110 and Groups G12-G14 & G33 have been displaced to allow for the effect of the adopted highway and existing watercourse. The surface area of the RPA has not been reduced.



Cited from Google Earth

REV	DATE	NOTE	Drawn	Chk'd



TITLE
**Land North and South of A422
 Newport Pagnell
 Tree Constraints Plan**

CLIENT
Bloor Homes South Midlands

SCALE 1:1500 @ A3	DATE MAY 2021	DRAWN GW
DRAWING NUMBER 10922 TCP 01 (6/6)		REVISION

Based on: 28389.dwg