

CALDECOTE FARM

NEWPORT PAGNELL · MILTON KEYNES

APPENDIX 11

ENVIRONMENTAL STATEMENT

LIGHTING

APPENDIX 11.3

EXTERNAL LIGHTING BASELINE SURVEY

APPENDIX 11.3 – EXTERNAL LIGHTING BASELINE SURVEY

SURVEY CONDITIONS

The areas immediately surrounding the Application Site and with views towards it were visited on 08 March 2017 in the evening. The weather conditions were dry with some cloud and the moon was 85% full. Existing lighting was observed and a photographic record made.

PHOTOGRAPHS

Figure 2 shows the locations visited. Figures 3 to 6 show night time views from the locations marked on the plan. These are panoramic views with a span of about 140 degrees. All photographs have been processed identically, with the aim of simulating the view that would be experienced by a human observer with eyesight that is fully or partially dark adapted. They are best viewed on screen rather than in print.

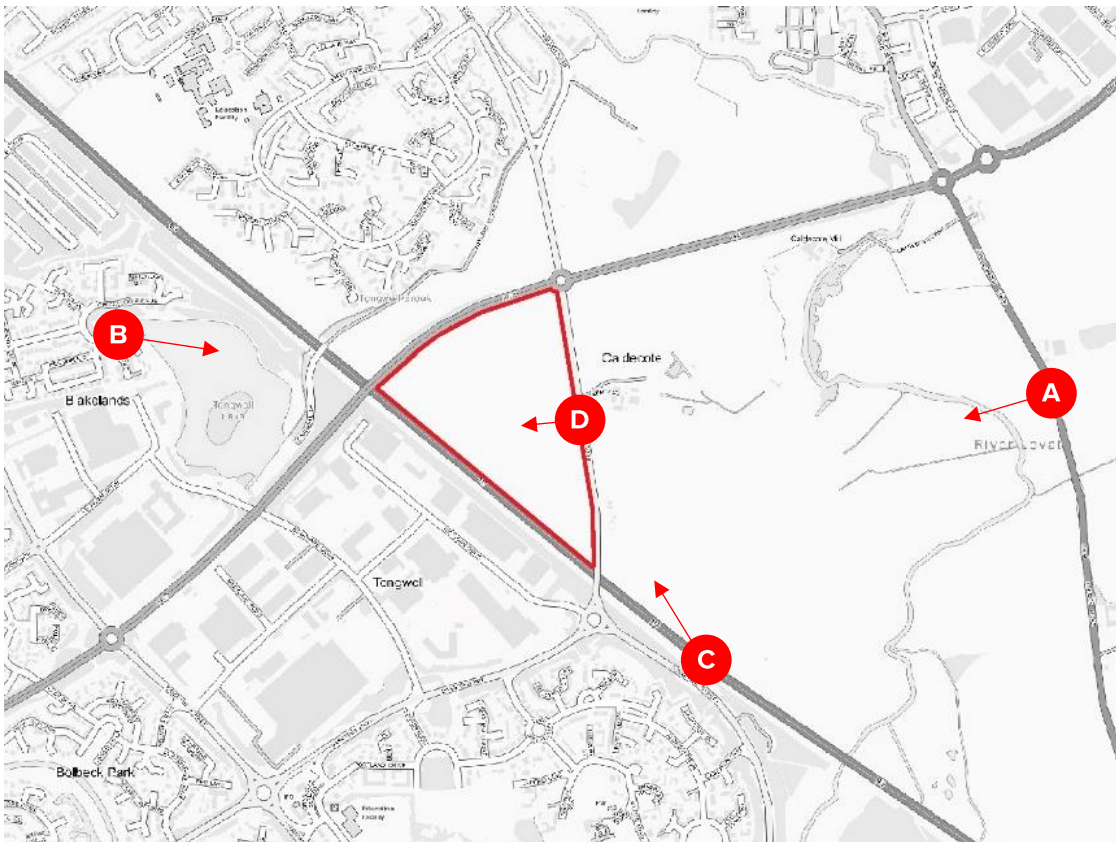


Figure 1 Night time viewpoints



Figure 2 Night time view from location A, close to 27 London Road, A509

- The intense sky glow towards the centre comes from the Tongwell and Blakelands industrial/commercial areas.
- The white sky glow just visible extreme left comes from the industrial/commercial areas in Brinklow
- The orange sky glow towards the right comes from the residential areas of Newport Pagnell which, at the time of this photograph were predominantly lit with low pressure sodium lighting. Since then a programme of replacement with modern white LED lighting has commenced, which over time will result in a lesser, whiter sky glow.
- Individual light sources on the horizon belong to street lighting on Willen Road, including the A422 Monks Way roundabout right of centre.



Figure 3 Night time view from location B, looking across Tongwell Lake from near Wedgwood Avenue

- The intense sky glow right of centre comes from the Tongwell and Blakelands industrial/commercial areas.
- The orange sky glow towards the left comes from the residential areas of Newport Pagnell, which, at the time of this photograph were predominantly lit with low pressure sodium lighting. Since then a programme of replacement with modern white LED lighting has commenced, which over time will result in a more subdued whiter sky glow.
- Foreground illumination is from street lighting in Wedgwood Avenue and a nearby estate footpath (just out of view on the right).



Figure 4 Night time view from location C, looking from footbridge over M1 Motorway off Tongwell Street

- The white sky glow to the left comes from the Tongwell and Blakelands industrial/commercial areas.
- The white lighting and its sky glow towards the right belongs to Interchange Park.
- The orange sky glow across most of the view comes from the residential areas of Milton Keynes and Newport Pagnell, which, at the time of this photograph were predominantly lit with low pressure sodium and high pressure sodium lighting. Since then a programme of replacement with modern white LED lighting has commenced, which over time will result in a more subdued whiter sky glow.
- Individual light sources on the horizon belong to street lighting on Willen Road.



Figure 5 Night time from location D, looking directly across the Application Site from its midpoint along Willen Road

- The intense sky glow left of centre comes from the Tongwell and Blakelands industrial/commercial areas.
- The orange sky glow across most of the view comes from the residential areas of Milton Keynes and Newport Pagnell, which, at the time of this photograph were predominantly lit with low pressure sodium and high pressure sodium lighting. Since then a programme of replacement with modern white LED lighting has commenced, which over time will result in a more subdued whiter sky glow .
- Foreground illumination is from street lighting in Willen Road.