



PANORAMA OF VIEWPOINT L8 ILLUSTRATING CONTEXT






VALUE: MEDIUM

VIEW SOUTH-EAST FROM NORTH CRAWLEY ROAD AS IT CROSSES THE A509. IN THIS VIEW THE SITE IS SEEN BEYOND AN ARABLE FIELD, WHICH FORMS PART OF THE WIDER ALLOCATION. IN THIS VIEW THE SITE IS EXTENDING OVER THE TICKFORD RIDGE.



PHOTOGRAPH – VIEWPOINT L8

LEGEND

-  SITE BOUNDARY
-  LOCATION OF PHOTOGRAPHIC VIEWPOINT – OPEN VIEW (AN OPEN VIEW OF THE WHOLE OF THE SITE OR OPEN VIEW OF PART OF THE SITE).
-  LOCATION OF PHOTOGRAPHIC VIEWPOINT – PARTIAL VIEW (A VIEW OF THE SITE WHICH FORMS A SMALL PART OF THE WIDER PANORAMA, OR WHERE VIEWS ARE FILTERED BETWEEN INTERVENING BUILT FORM OR VEGETATION).
-  LOCATION OF PHOTOGRAPHIC VIEWPOINT – TRUNCATED VIEW (VIEWS OF THE SITE ARE OBSCURED BY THE INTERVENING BUILT FORM AND / OR VEGETATION, OR IS DIFFICULT TO PERCEIVE).
-  VVM LOCATION

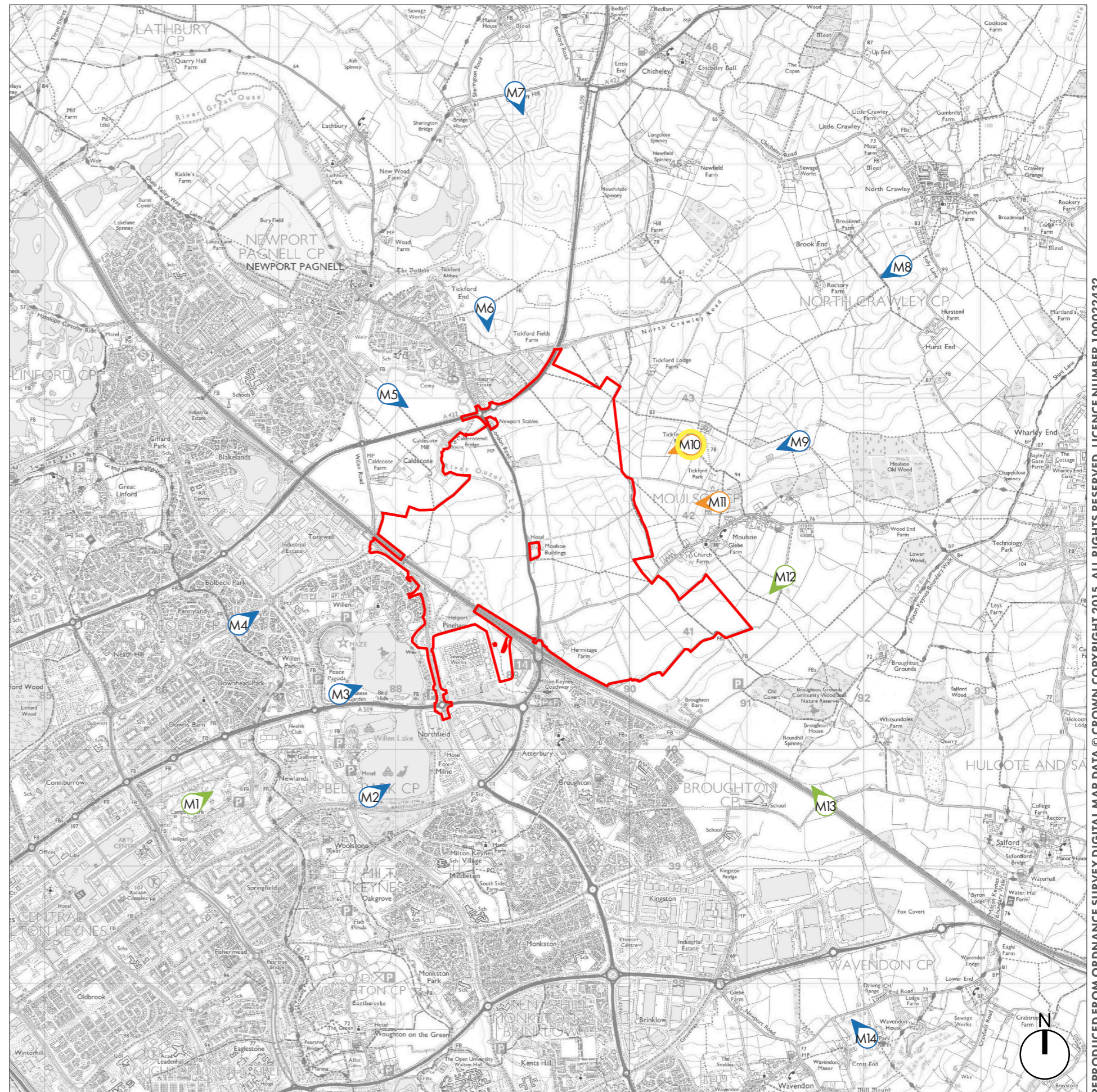


FIGURE E3.3 – LOCATION PLAN SHOWING VISUAL SUMMARY FROM MID DISTANCE RECEPTORS (FABRIK, 2021)

REPRODUCED FROM ORDNANCE SURVEY DIGITAL MAP DATA © CROWN COPYRIGHT 2015. ALL RIGHTS RESERVED. LICENCE NUMBER 100022432



PANORAMA OF VIEWPOINT M1 ILLUSTRATING CONTEXT VALUE: HIGH

LOOKING NORTH EAST TOWARDS THE SITE FROM THE BELVEDERE PROMONTARY WITHIN CAMPBELL PARK. OPEN PANORAMIC VIEWS OF THE COUNTRYSIDE ARE EVIDENT AND DOMINATE THIS VIEW. FROM THIS ELEVATED LOCATION PARTIAL DISTANT VIEWS OF THE SITE CAN BE SEEN AND THE CONFIGURATION OF THE LANDSCAPE ELEMENTS ENABLES THE IDENTIFICATION OF THE SITE IN THE WIDER LANDSCAPE FROM THIS LOCATION.



PHOTOGRAPH – VIEWPOINT M1



PANORAMA OF VIEWPOINT M2 ILLUSTRATING CONTEXT

VALUE: MEDIUM

VIEW LOOKING NORTH EAST TOWARDS THE SITE FROM WILLEN LAKE. OPEN VIEWS ACROSS THE LAKE ARE EVIDENT WITH A MATURE TREE BELT AND COMMERCIAL UNITS OBSCURING DISTANT VIEWS TOWARDS THE SITE.



PHOTOGRAPH – VIEWPOINT M2



PANORAMA OF VIEWPOINT M3 ILLUSTRATING CONTEXT

VALUE: MEDIUM

LOOKING NORTH EAST TOWARDS THE SITE FROM A PROMONTORY WITHIN WILLEN PARK. OPEN PANORAMIC VIEWS ACROSS THE PARK DOMINATE THIS VIEW. HOWEVER, DUE TO THE INTERVENING MATURE VEGETATION VIEWS OF THE SITE FROM THIS LOCATION ARE TRUNCATED.



PHOTOGRAPH – VIEWPOINT M3



PANORAMA OF VIEWPOINT M4 ILLUSTRATING CONTEXT

VALUE: LOW

LOOKING NORTH EAST TOWARDS THE SITE FROM DANSTEED ROAD. MATURE VEGETATION THAT LINES THE ROAD CREATES A GREEN CORRIDOR AND OBSCURES ANY DISTANT VIEWS OF THE SITE FROM THIS LOCATION.



PHOTOGRAPH – VIEWPOINT M4



PANORAMA OF VIEWPOINT M5 ILLUSTRATING CONTEXT **VALUE: LOW**
LOOKING SOUTH EAST TOWARDS THE SITE FROM THE PUBLIC RIGHT OF WAY THAT PROVIDES A LINK BETWEEN WILLEN ROAD AND THE A422. OPEN VIEWS OF ARABLE LAND DOMINATE THIS VIEW WITH MATURE BOUNDARY VEGETATION OBSCURING VIEWS OF THE A422 AND THE SITE BEYOND.



PHOTOGRAPH – VIEWPOINT M5



PANORAMA OF VIEWPOINT M6 ILLUSTRATING CONTEXT
LOOKING SOUTH TOWARDS THE SITE FROM NEWPORT PAGNELL FOOTPATH 15 THAT PROVIDES A LINK BETWEEN NEWPORT PAGNELL AND HILL FARM. OPEN VIEWS OF PASTURE LAND DOMINATE THE FOREGROUND. HEDGEROWS AND INDIVIDUAL TREES DEFINE THE HORIZON LINE AND OBSCURE ANY VIEWS OF THE SITE FROM THIS LOCATION.



PHOTOGRAPH – VIEWPOINT M6



PANORAMA OF VIEWPOINT M7 ILLUSTRATING CONTEXT

VIEW LOOKING SOUTH TOWARDS THE SITE FROM CHICHELEY HILL ROAD. OPEN VIEWS OF ARABLE LAND DOMINATE THIS VIEW. DUE TO THE UNDULATING TOPOGRAPHY WITHIN THE LOCAL AREA VIEWS OF THE SITE ARE TRUNCATED FROM THIS LOCATION.



PHOTOGRAPH – VIEWPOINT MI7



PANORAMA OF VIEWPOINT M8 ILLUSTRATING CONTEXT

VALUE: MEDIUM

VIEW LOOKING SOUTH WEST FROM NORTH CRAWLEY ON FOOTPATH 20 WHICH EXTENDS FROM NORTH CRAWLEY TO A PUBLIC BRIDLEWAY. INTERVENING LANDFORM AND VEGETATION MAKE THE SITE VERY DIFFICULT TO PERCEIVE.



PHOTOGRAPH – VIEWPOINT M8



PANORAMA OF VIEWPOINT M9 ILLUSTRATING CONTEXT

VALUE: MEDIUM

IN VIEWS FROM THIS ELEVATED PATH, WHICH CROSSES THE MOULSOE OLD WOOD RIDGE THE SITE IS OBSCURED BY INTERVENING WOODLAND. DISTANT VIEWS EXTEND TO NEWPORT PAGNELL IN WHICH THE GRADE I LISTED CHURCH OF ST. PETER AND ST. PAUL IS VISIBLE.



PHOTOGRAPH – VIEWPOINT M9



PANORAMA OF VIEWPOINT M10 ILLUSTRATING CONTEXT

VALUE: MEDIUM

VIEW SOUTH-WEST FROM FOOTPATH 12, WHICH CONNECTS MOULSOE WITH TICKFORD PARK FARM. IN VIEWS FROM THIS ELEVATED POSITION, ON THE TICKFORD RIDGE SOUTH OF THE FARM PANORAMIC VIEWS EXTEND OVER THE MOULSOE BOWL TO THE NORTH-EAST FACING SLOPES OF THE MOULSOE RIDGE WITHIN THE SITE.

CUT LINE





PHOTOGRAPH – VIEWPOINT M10



CUT LINE

PANORAMA OF VIEWPOINT M11 ILLUSTRATING CONTEXT

VALUE: MEDIUM

VIEW WEST FROM FOOTPATH 7, WHICH EXTENDS FROM MOULSOE AND CONNECTS TO BRIDLEWAY 3 WITHIN THE SITE. VIEWS EXTEND TO THE SOUTH-WEST FACING SLOPES OF THE MOULSOE RIDGE WITHIN THE SITE. DISTANT VIEWS EXTEND TO A LARGELY WOODED SKYLINE IN WHICH LARGER BUILDINGS IN MILTON KEYNES AND NEWPORT PAGNELL ARE VISIBLE INCLUDING THE SNOWDOME ON THE HORIZON.

CUT LINE





PHOTOGRAPH – VIEWPOINT M11



CUT LINE

PANORAMA OF VIEWPOINT M12 ILLUSTRATING CONTEXT

VALUE: MEDIUM

LOOKING SOUTH WEST TOWARDS THE SITE FROM FOOTPATH 6 THAT PROVIDES A LINK BETWEEN MOULSOE AND THE WIDER COUNTRYSIDE. OPEN VIEWS OF ARABLE LAND DOMINATE WITH THE LAND GENTLY RISING TO MEET THE RIDGELINE TO THE NORTH. DUE TO THE UNDULATING TOPOGRAPHY VIEWS OF THE SITE ARE TRUNCATED FROM THIS LOCATION.

CUT LINE





PHOTOGRAPH – VIEWPOINT M12



PANORAMA OF VIEWPOINT M13 ILLUSTRATING CONTEXT

VALUE: LOW

VIEW NORTH-WEST FROM SALFORD ROAD AS IT CROSSES THE M1 MOTORWAY. DISTANT VIEWS OF THE SITE ARE VERY DIFFICULT TO PERCEIVE BEYOND LAYERS OF HEDGEROW AND WOODLAND. EXTENSIVE PLANTING AND BUNDING IS SEEN TO THE LEFT OF THE PHOTOGRAPH TO SCREEN NEW HOUSING ON MILTON KEYNES EASTERN EDGE..



PHOTOGRAPH – VIEWPOINT M13

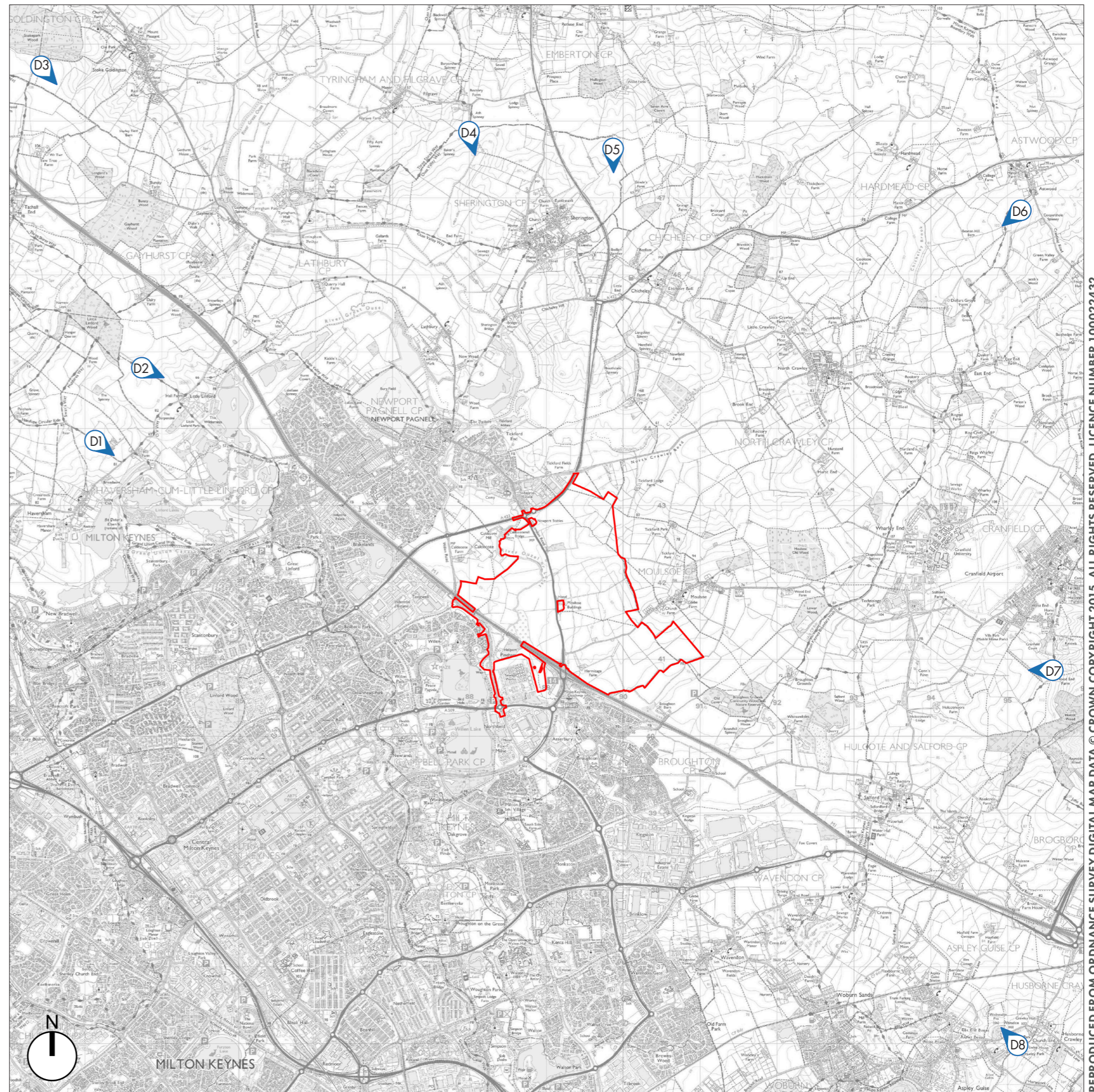


PANORAMA OF VIEWPOINT M14 ILLUSTRATING CONTEXT

VIEW NORTH-WEST FROM WAVENDON FOOTPATH 2 WHICH EXTENDS FROM CROSS END TO WAVENDON HOUSE. ROUGH GRASSLAND AND TREE PLANTATIONS DOMINATE THE FOREGROUND OF THE VIEW. LARGE DISTRIBUTION WAREHOUSES ARE SEEN IN THE MID-DISTANCE, WHICH TRUNCATE VIEWS TOWARDS THE SITE.



PHOTOGRAPH – VIEWPOINT MI14



LEGEND

- SITE BOUNDARY**
- 21 **LOCATION OF PHOTOGRAPHIC VIEWPOINT – OPEN VIEW (AN OPEN VIEW OF THE WHOLE OF THE SITE OR OPEN VIEW OF PART OF THE SITE).**
- 21 **LOCATION OF PHOTOGRAPHIC VIEWPOINT – PARTIAL VIEW (A VIEW OF THE SITE WHICH FORMS A SMALL PART OF THE WIDER PANORAMA, OR WHERE VIEWS ARE FILTERED BETWEEN INTERVENING BUILT FORM OR VEGETATION).**
- 21 **LOCATION OF PHOTOGRAPHIC VIEWPOINT – TRUNCATED VIEW (VIEWS OF THE SITE ARE OBSCURED BY THE INTERVENING BUILT FORM AND / OR VEGETATION, OR IS DIFFICULT TO PERCEIVE).**

LOCATION PLAN SHOWING VISUAL SUMMARY FROM DISTANT RECEPTORS (FABRIK, 2021)

REPRODUCED FROM ORDNANCE SURVEY DIGITAL MAP DATA © CROWN COPYRIGHT 2015. ALL RIGHTS RESERVED. LICENCE NUMBER 100022432



PANORAMA OF VIEWPOINT D1 ILLUSTRATING CONTEXT

VIEW LOOKING SOUTH EAST TOWARDS THE SITE FROM HAVERSHAM/LITTLE LINFORD BRIDLEWAY 29. FROM THIS ELEVATED LOCATION OPEN PANORAMIC VIEWS OF THE COUNTRYSIDE DOMINATE. HOWEVER, DUE TO THE INTERVENING VEGETATION AND UNDULATING TOPOGRAPHY VIEWS OF THE SITE ARE TRUNCATED FROM THIS LOCATION.