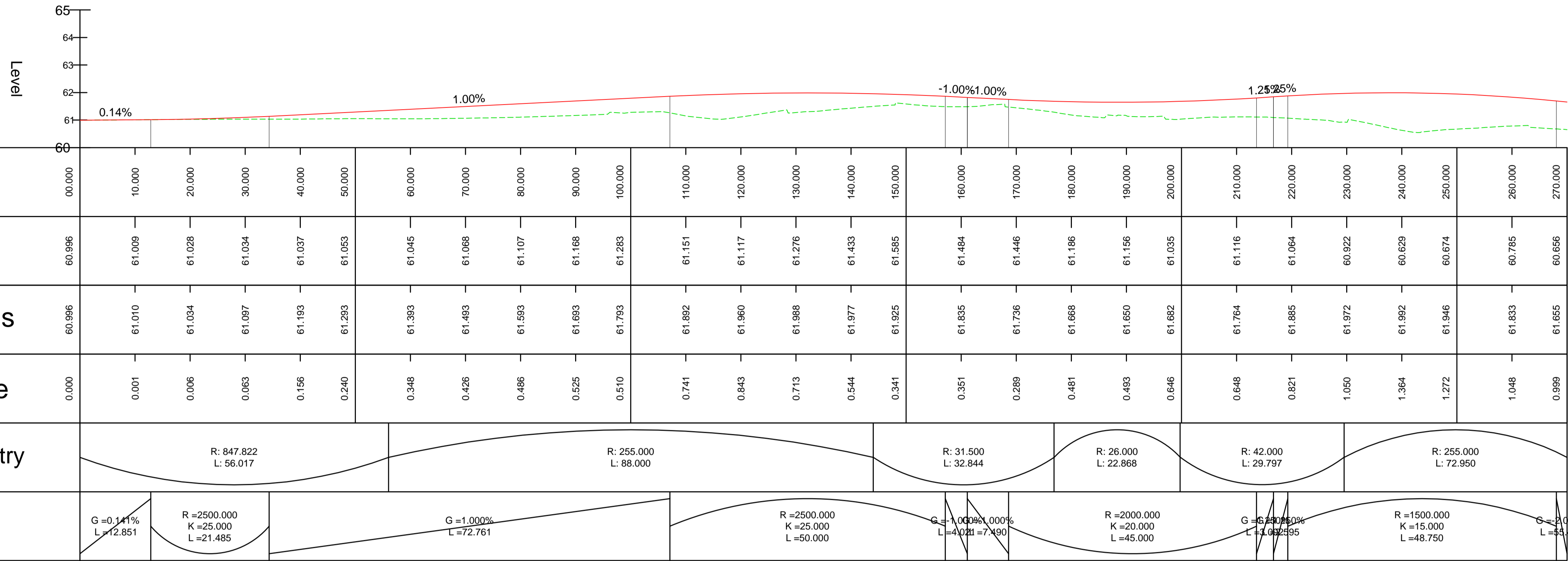


A509 DUAL CARRIAGEWAY - CH 000.000M - CH 270.000M  
SCALE: H 1:500, V 1:100. DATUM: 60.000



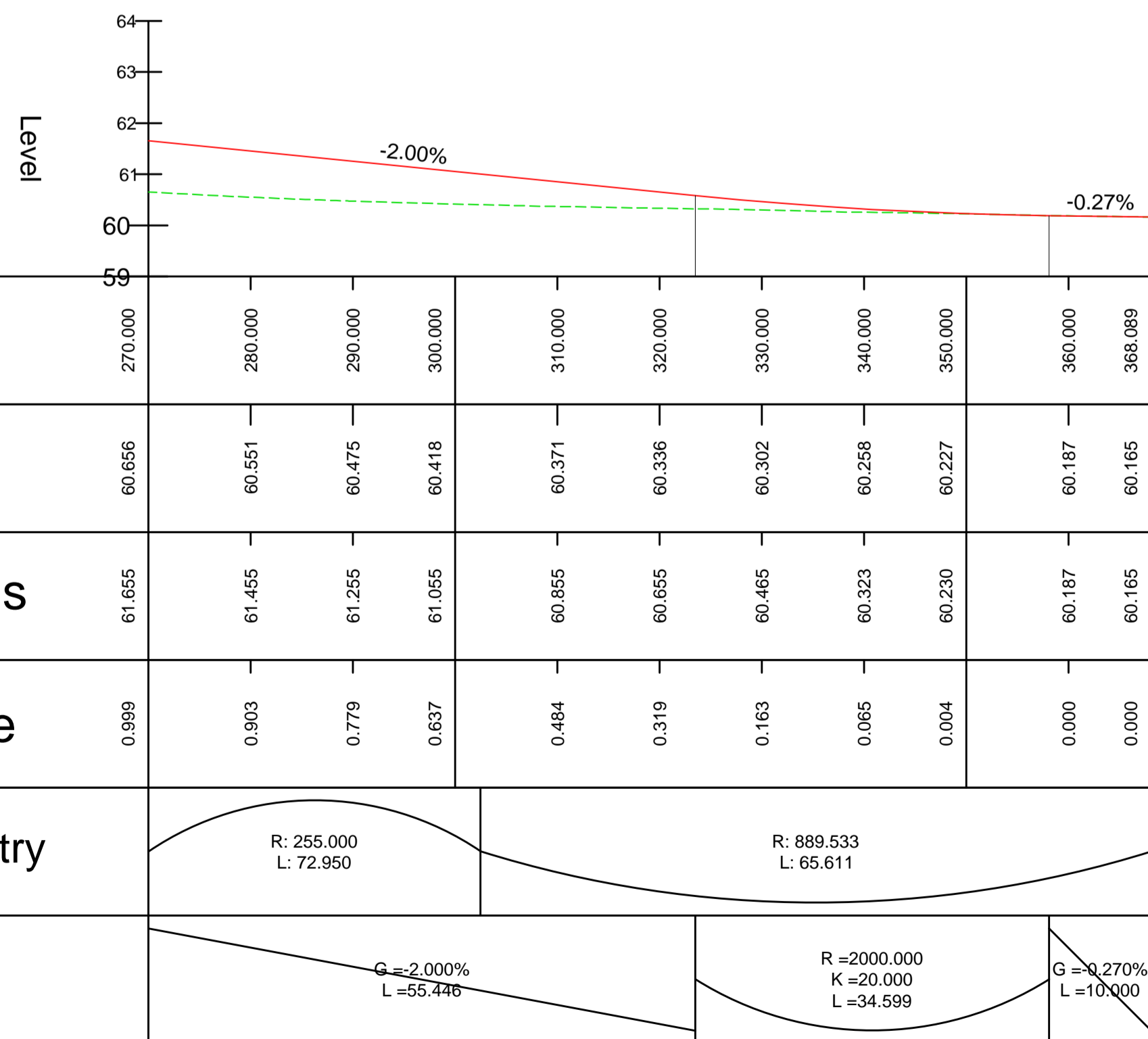
- NOTES:
- ALL DIMENSIONS ARE IN METRES UNLESS OTHERWISE STATED.
  - ALL LEVELS ARE IN METRES ABOVE ORDNANCE DATUM NEWLYN (AOD).
  - THIS DRAWING SHOULD BE READ IN CONJUNCTION WITH ALL RELEVANT DOCUMENTATION, DRAWINGS AND STANDARD DETAILS.
  - THIS DRAWING IS NOT TO BE REPRODUCED IN ANY PART OF FORM WITHOUT PRIOR CONSENT FROM WSP UK LIMITED, ALL COPY RIGHT RESERVED.
  - CONFLICTING INFORMATION SHOWN ON THE ENGINEER'S DRAWINGS OR DISCREPANCIES BETWEEN THE INFORMATION GIVEN BY THE ENGINEER AND THAT PROVIDED BY OTHERS MUST BE REFERRED TO THE ENGINEER BEFORE THE WORKS COMMENCE.

KEY:

— PROPOSED ROAD ALIGNMENT

- - - TOPOGRAPHICAL SURVEY

A509 DUAL CARRIAGEWAY - CH 270.000M - CH 368.089M  
SCALE: H 1:500, V 1:100. DATUM: 59.000



UNTIL TECHNICAL APPROVAL HAS BEEN OBTAINED FROM THE RELEVANT LOCAL AUTHORITIES OR STATUTORY BODIES, IT SHOULD BE UNDERSTOOD THAT ALL DRAWINGS ARE ISSUED AS PRELIMINARY AND NOT FOR CONSTRUCTION. SHOULD THE CONTRACTOR AND / OR EMPLOYER COMMENCE WORK PRIOR TO APPROVAL BEING GIVEN, IT IS ENTIRELY AT THEIR OWN RISK.

PO1	26/03/2021	GLG	ISSUED FOR PLANNING	ARP	SAP
REV	DATE	BY	DESCRIPTION	CHK	APP

DRAWING STATUS: S4 - FOR APPROVAL



CLIENT: BERKELEY ST JAMES

ARCHITECT: JTP / STEPHEN GEORGE AND PARTNERS

SITE/PROJECT: MILTON KEYNES EAST

TITLE: A509 DUAL CARRIAGEWAY  
LONG SECTION  
CH 000.000m - CH 368.089m

SCALE @ A1: AS SHOWN | CHECKED: ARP | APPROVED: SAP

PROJECT NO: 70057521 | DESIGNED: ARP | DRAWN: GLG | DATE: March 21

DRAWING No: MKE-WSP-ZZ-ZZ-C-SK-2850 | REV: P01