

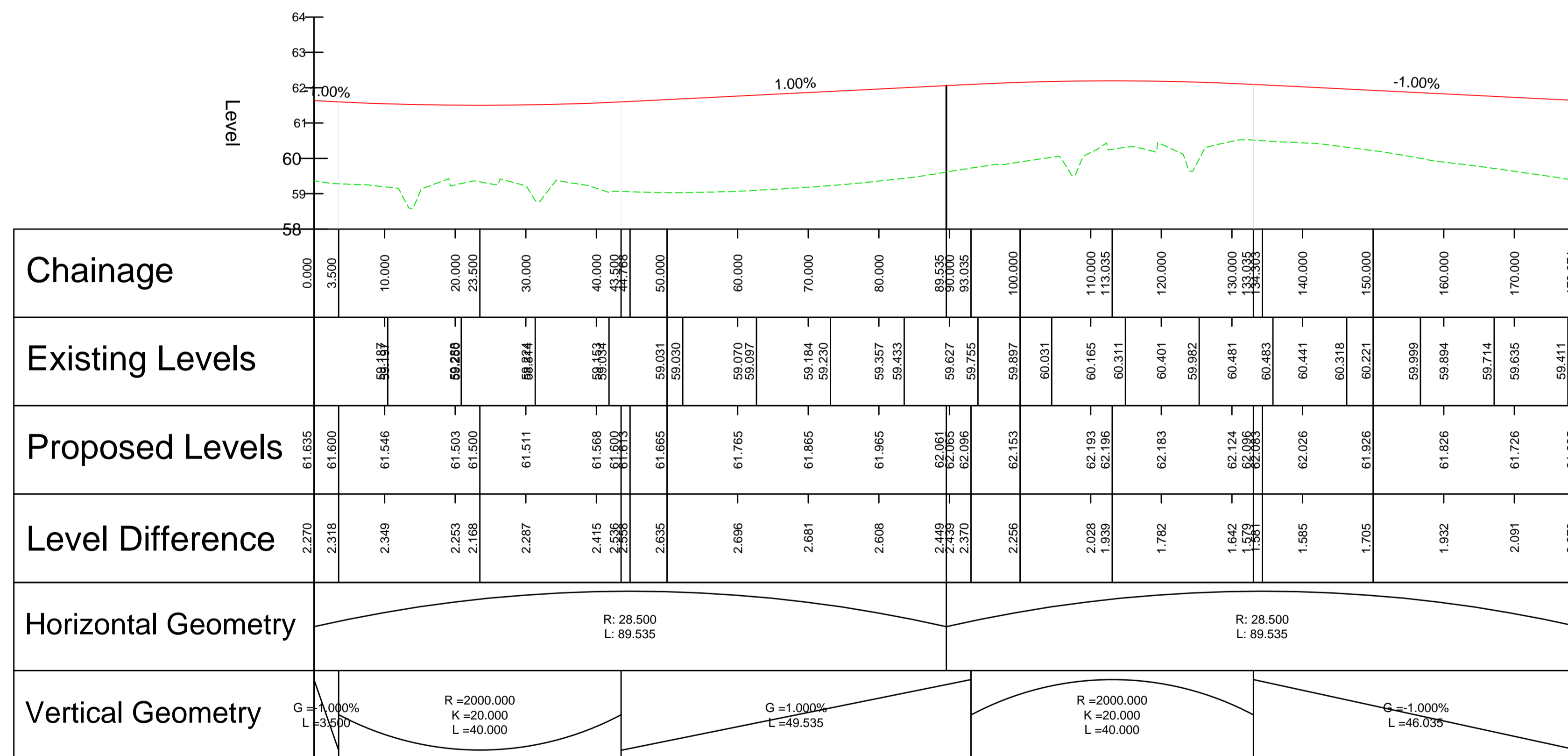
NOTES:

1. ALL DIMENSIONS ARE IN METRES UNLESS OTHERWISE STATED.
2. ALL LEVELS ARE IN METRES ABOVE ORDNANCE DATUM NEWLYN (AOD).
3. THIS DRAWING SHOULD BE READ IN CONJUNCTION WITH ALL RELEVANT DOCUMENTATION, DRAWINGS AND STANDARD DETAILS.
4. THIS DRAWING IS NOT TO BE REPRODUCED IN ANY PART OF FORM WITHOUT PRIOR CONSENT FROM WSP UK LIMITED, ALL COPY RIGHT RESERVED.
5. CONFLICTING INFORMATION SHOWN ON THE ENGINEER'S DRAWINGS OR DISCREPANCIES BETWEEN THE INFORMATION GIVEN BY THE ENGINEER AND THAT PROVIDED BY OTHERS MUST BE REFERRED TO THE ENGINEER BEFORE THE WORKS COMMENCE.

KEY:

- PROPOSED ROAD ALIGNMENT
- - - TOPOGRAPHICAL SURVEY

**A509 ROUNDABOUT 1 - LONGSECTION -CH 000.000M - CH 179.071M
SCALE: H 1:500,V 1:100. DATUM: 58.000**



UNTIL TECHNICAL APPROVAL HAS BEEN OBTAINED FROM THE RELEVANT LOCAL AUTHORITIES OR STATUTORY BODIES, IT SHOULD BE UNDERSTOOD THAT ALL DRAWINGS ARE ISSUED AS PRELIMINARY AND NOT FOR CONSTRUCTION. SHOULD THE CONTRACTOR AND / OR EMPLOYER COMMENCE WORK PRIOR TO APPROVAL BEING GIVEN, IT IS ENTIRELY AT THEIR OWN RISK

PO2	26/03/2021	GLG	MINOR AMENDMENTS FOR PLANNING	APP	SAP
P01	12/03/2021	OPL	ISSUED FOR PLANNING	APP	SAP
REV	DATE	BY	DESCRIPTION	CHK	APP

DRAWING STATUS:	S4 - FOR APPROVAL
-----------------	-------------------

Grosvenor House, 2 Grosvenor Square, Southampton, SO15 2BE, UK
T+ 44 (0) 2380 101 700
wsp.com

CLIENT: BERKELEY ST JAMES

ARCHITECT: JTP / STEPHEN GEORGE AND PARTNERS

SITE/PROJECT: MILTON KEYNES EAST

TITLE: A509 ROUNDABOUT 1 LONG SECTION
CH 000.000 - CH 179.071

SCALE @ A1:	AS SHOWN	CHECKED:	ARP	APPROVED:	SAP
-------------	----------	----------	-----	-----------	-----

PROJECT NO:	70057521	DESIGNED:	ARP	DRAWN:	OPL	DATE:	November 20
-------------	----------	-----------	-----	--------	-----	-------	-------------

DRAWING NO:	MKE-WSP-ZZ-ZZ-C-SK-2841	REV:	P02
-------------	-------------------------	------	-----

© WSP UK Ltd