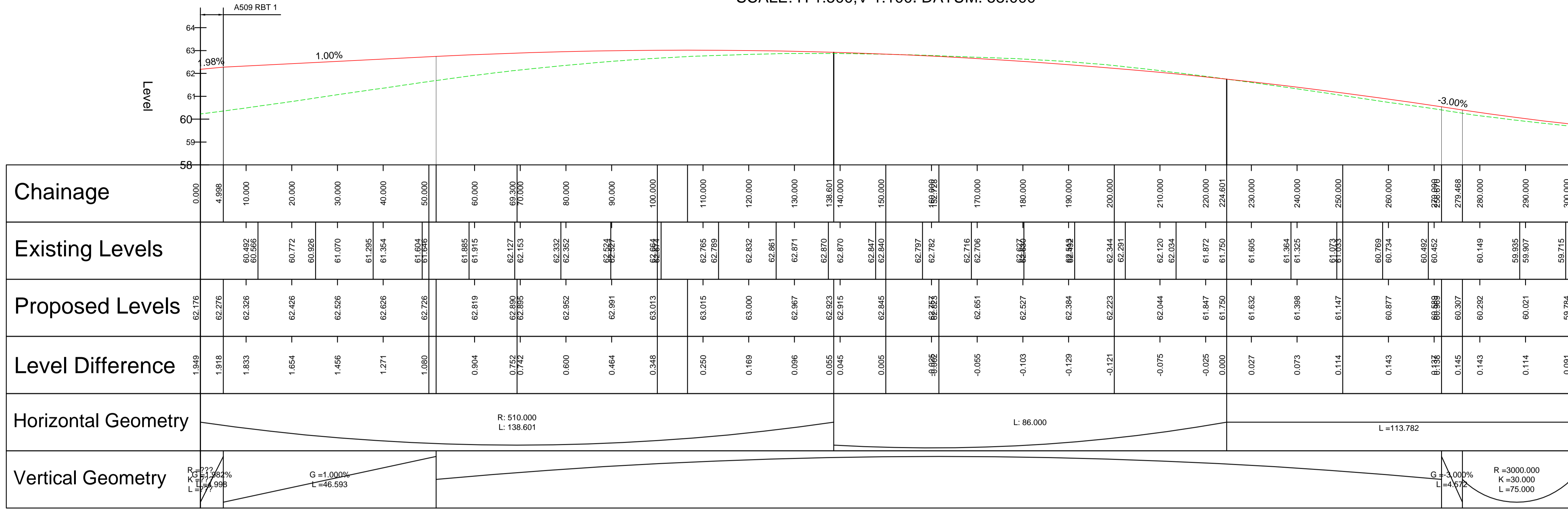


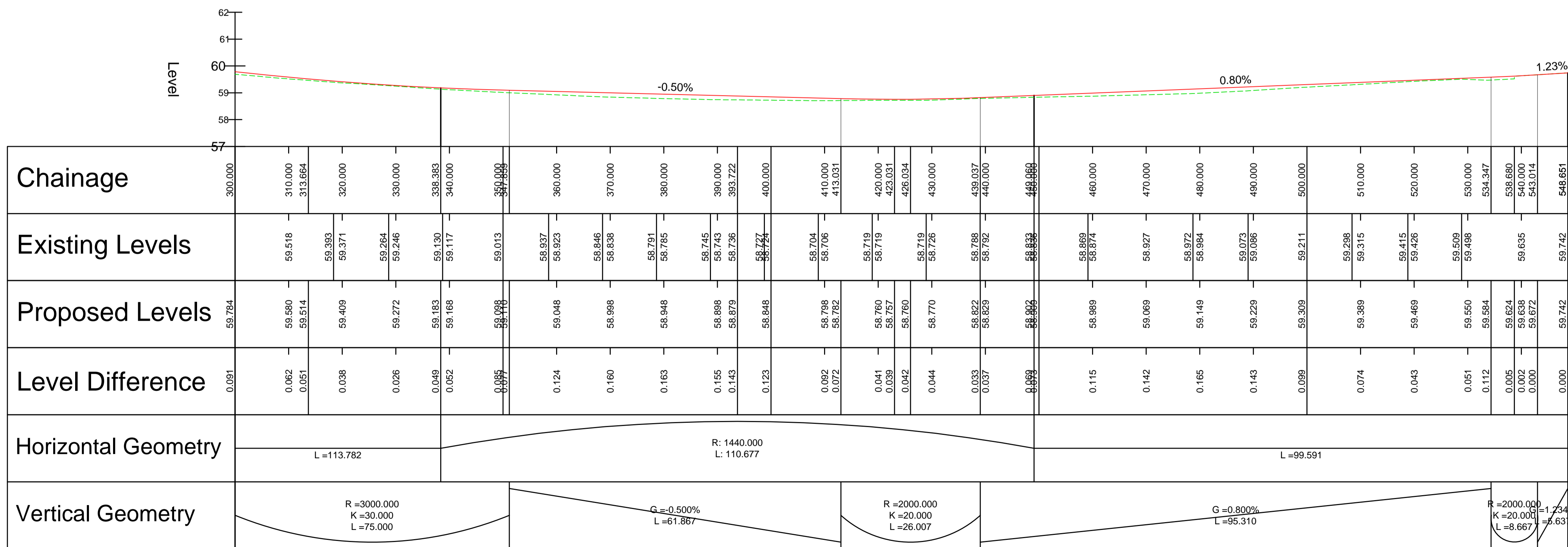
LINK 108 - LONGSECTION - CH 000.000M - 300.000M  
SCALE: H 1:500,V 1:100. DATUM: 58.000



- NOTES:
- ALL DIMENSIONS ARE IN METRES UNLESS OTHERWISE STATED.
  - ALL LEVELS ARE IN METRES ABOVE ORDNANCE DATUM NEWLYN (AOD).
  - THIS DRAWING SHOULD BE READ IN CONJUNCTION WITH ALL RELEVANT DOCUMENTATION, DRAWINGS AND STANDARD DETAILS.
  - THIS DRAWING IS NOT TO BE REPRODUCED IN ANY PART OF FORM WITHOUT PRIOR CONSENT FROM WSP UK LIMITED, ALL COPY RIGHT RESERVED.
  - CONFLICTING INFORMATION SHOWN ON THE ENGINEER'S DRAWINGS OR DISCREPANCIES BETWEEN THE INFORMATION GIVEN BY THE ENGINEER AND THAT PROVIDED BY OTHERS MUST BE REFERRED TO THE ENGINEER BEFORE THE WORKS COMMENCE.

KEY:  
 PROPOSED ROAD ALIGNMENT  
 TOPOGRAPHICAL SURVEY

LINK 108 - LONGSECTION - CH 300.000M - CH 548.651M  
SCALE: H 1:500,V 1:100. DATUM: 57.000



UNTIL TECHNICAL APPROVAL HAS BEEN OBTAINED FROM THE RELEVANT LOCAL AUTHORITIES OR STATUTORY BODIES, IT SHOULD BE UNDERSTOOD THAT ALL DRAWINGS ARE ISSUED AS PRELIMINARY AND NOT FOR CONSTRUCTION. SHOULD THE CONTRACTOR AND / OR EMPLOYER COMMENCE WORK PRIOR TO APPROVAL BEING GIVEN, IT IS ENTIRELY AT THEIR OWN RISK

REV	DATE	BY	DESCRIPTION	CHK	APP
P03	26/03/2021	OPL	MINOR AMENDMENTS FOR PLANNING	ARP	SAP
P02	12/03/2021	OPL	ISSUED FOR PLANNING	ARP	SAP
P01	20/11/2020	GLG	FIRST ISSUE	ARP	SAP

DRAWING STATUS: **S4 - FOR APPROVAL**



CLIENT: **BERKELEY ST JAMES**

ARCHITECT: **JTP / STEPHEN GEORGE AND PARTNERS**

SITE/PROJECT: **MILTON KEYNES EAST**

TITLE: **LINK 108 LONG SECTION  
CH 000.000m - CH 548.651m**

SCALE @ AT:	CHECKED:	APPROVED:
AS SHOWN	ARP	SAP

PROJECT NO:	DESIGNED:	DRAWN:	DATE:
70057521	ARP	GLG	November 20

DRAWING NO:	REV:
MKE-WSP-ZZ-ZZ-C-SK-2813	P03

© WSP UK Ltd

File name: I:\UK\WSPGROUP\CENTRAL\DATA\PROJECTS\70057521\WSP-ZZ-ZZ-C-SK-2813\LINK108 - WSP - PLANNING APPLICATIONS\WSP-ZZ-ZZ-C-SK-2813.DWG, printed on 25 March 2021 13:56:58 by Bowen, Dean