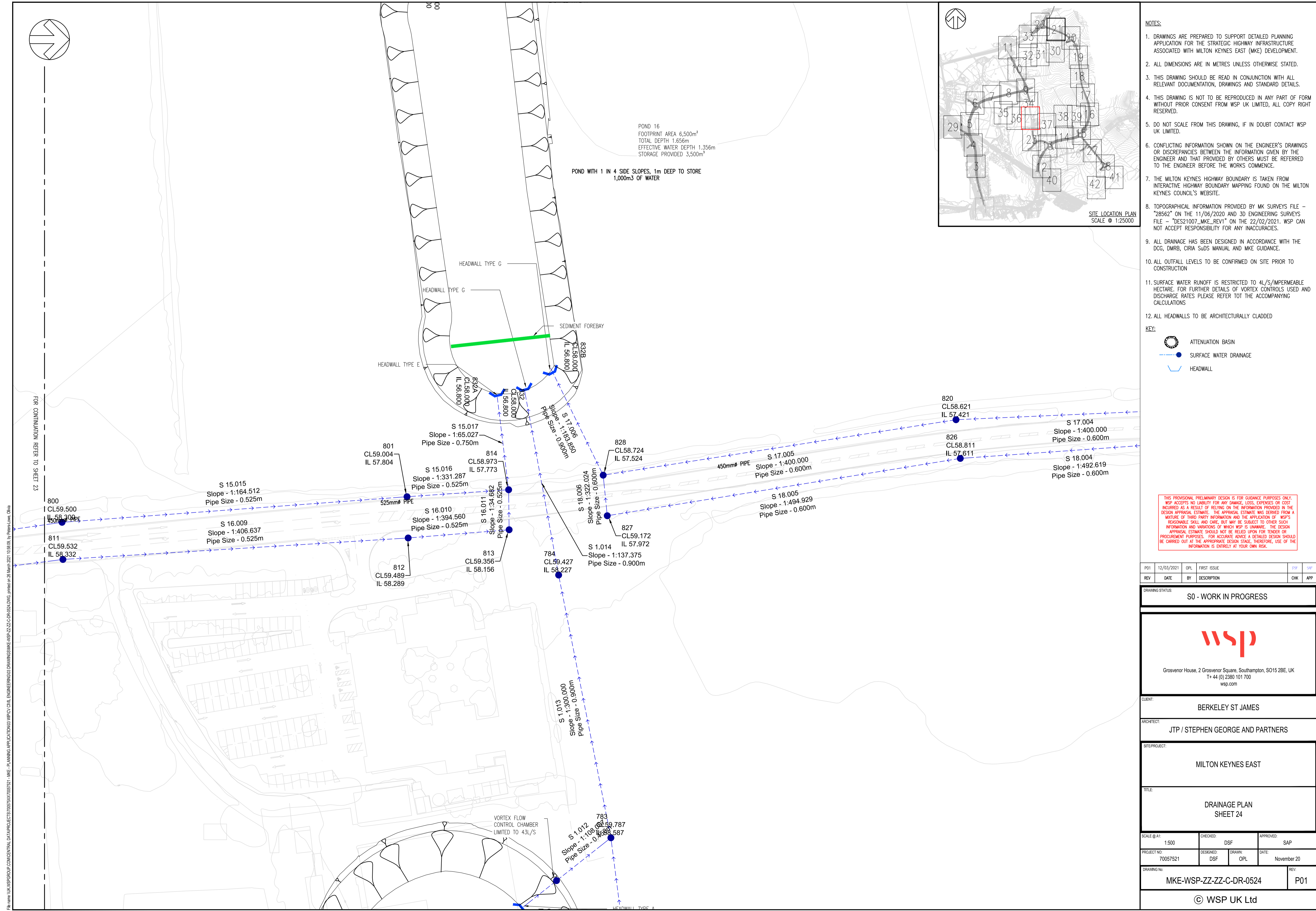
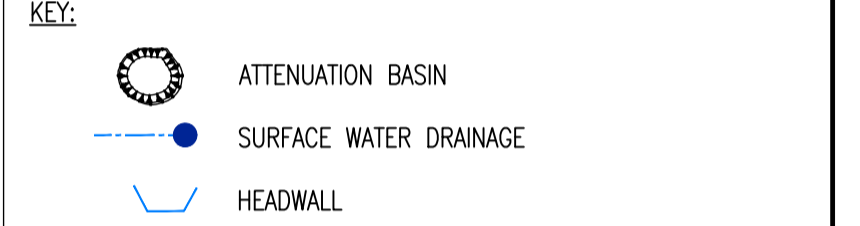


POND 16
FOOTPRINT AREA 6,500m²
TOTAL DEPTH 1.656m
EFFECTIVE WATER DEPTH 1.356m
STORAGE PROVIDED 3,500m³

POND WITH 1 IN 4 SIDE SLOPES, 1m DEEP TO STORE 1,000m³ OF WATER



- NOTES:**
- DRAWINGS ARE PREPARED TO SUPPORT DETAILED PLANNING APPLICATION FOR THE STRATEGIC HIGHWAY INFRASTRUCTURE ASSOCIATED WITH MILTON KEYNES EAST (MKE) DEVELOPMENT.
 - ALL DIMENSIONS ARE IN METRES UNLESS OTHERWISE STATED.
 - THIS DRAWING SHOULD BE READ IN CONJUNCTION WITH ALL RELEVANT DOCUMENTATION, DRAWINGS AND STANDARD DETAILS.
 - THIS DRAWING IS NOT TO BE REPRODUCED IN ANY PART OF FORM WITHOUT PRIOR CONSENT FROM WSP UK LIMITED, ALL COPY RIGHT RESERVED.
 - DO NOT SCALE FROM THIS DRAWING, IF IN DOUBT CONTACT WSP UK LIMITED.
 - CONFLICTING INFORMATION SHOWN ON THE ENGINEER'S DRAWINGS OR DISCREPANCIES BETWEEN THE INFORMATION GIVEN BY THE ENGINEER AND THAT PROVIDED BY OTHERS MUST BE REFERRED TO THE ENGINEER BEFORE THE WORKS COMMENCE.
 - THE MILTON KEYNES HIGHWAY BOUNDARY IS TAKEN FROM INTERACTIVE HIGHWAY BOUNDARY MAPPING FOUND ON THE MILTON KEYNES COUNCIL'S WEBSITE.
 - TOPOGRAPHICAL INFORMATION PROVIDED BY MK SURVEYS FILE - "28562" ON THE 11/06/2020 AND 3D ENGINEERING SURVEYS FILE - "DES21007_MKE_REV1" ON THE 22/02/2021. WSP CAN NOT ACCEPT RESPONSIBILITY FOR ANY INACCURACIES.
 - ALL DRAINAGE HAS BEEN DESIGNED IN ACCORDANCE WITH THE DCG, DMRB, CIRIA SuDS MANUAL AND MKE GUIDANCE.
 - ALL OUTFALL LEVELS TO BE CONFIRMED ON SITE PRIOR TO CONSTRUCTION
 - SURFACE WATER RUNOFF IS RESTRICTED TO 4L/S/IMPERMEABLE HECTARE. FOR FURTHER DETAILS OF VORTEX CONTROLS USED AND DISCHARGE RATES PLEASE REFER TOT THE ACCOMPANYING CALCULATIONS
 - ALL HEADWALLS TO BE ARCHITECTURALLY CLADDED



THIS PROVISIONAL PRELIMINARY DESIGN IS FOR GUIDANCE PURPOSES ONLY. WSP ACCEPTS NO LIABILITY FOR ANY DAMAGE, LOSS, EXPENSES OR COST INCURRED AS A RESULT OF RELYING ON THE INFORMATION PROVIDED IN THE DESIGN APPROVAL ESTIMATE. THE APPRAISAL ESTIMATE WAS DERIVED FROM A MIXTURE OF THIRD PARTY INFORMATION AND THE APPLICATION OF WSP'S REASONABLE SKILL AND CARE, BUT MAY BE SUBJECT TO OTHER SUCH INFORMATION AND VARIATIONS OF WHICH WSP IS UNWARE. THE DESIGN APPRAISAL ESTIMATE SHOULD NOT BE RELIED UPON FOR TENDER OR PROCUREMENT PURPOSES. FOR ACCURATE ADVICE A DETAILED DESIGN SHOULD BE CARRIED OUT AT THE APPROPRIATE DESIGN STAGE. THEREFORE, USE OF THE INFORMATION IS ENTIRELY AT YOUR OWN RISK.

PO1	12/03/2021	OPL	FIRST ISSUE	DSF	SAP
REV	DATE	BY	DESCRIPTION	CHK	APP

DRAWING STATUS: **S0 - WORK IN PROGRESS**

wsp

Grosvenor House, 2 Grosvenor Square, Southampton, SO15 2BE, UK
T+ 44 (0) 2380 101 700
wsp.com

CLIENT: **BERKELEY ST JAMES**

ARCHITECT: **JTP / STEPHEN GEORGE AND PARTNERS**

SITE/PROJECT: **MILTON KEYNES EAST**

TITLE: **DRAINAGE PLAN SHEET 24**

SCALE @ A1:	1:500	CHECKED:	DSF	APPROVED:	SAP
PROJECT NO:	70057521	DESIGNED:	DSF	DATE:	November 20

DRAWING NO: **MKE-WSP-ZZ-ZZ-C-DR-0524** REV: **P01**

© WSP UK Ltd