

**PUBLIC PATH DIVERSION AND DEFINITIVE MAP AND STATEMENT  
MODIFICATION ORDER**

**TOWN AND COUNTRY PLANNING ACT 1990, SECTION 257 AND  
WILDLIFE AND COUNTRYSIDE ACT 1981, SECTION 53A(2)**

**THE COUNCIL OF THE BOROUGH OF MILTON KEYNES  
(MOULSOE FOOTPATH 2 (PART)) PUBLIC PATH DIVERSION  
ORDER 2022**

This Order is made by the Council of the Borough of Milton Keynes under Section 257 of the Town and Country Planning Act 1990 because it is satisfied that it is necessary to divert that part of the footpath to which this Order relates in order to enable development to be carried out in accordance with planning permission reference 21/00999/OUTEIS granted under Part III of the Town and Country Planning Act 1990, namely the planned residential and mixed use development of land, as part of the Milton Keynes East development, land east and west of A509 London Road, Newport Pagnell, Milton Keynes.

This Order is also made under Section 53A(2) of the Wildlife and Countryside Act 1981 ("the 1981 Act") because it appears to the authority that the Definitive Map and Statement for Milton Keynes require modification in consequence of the occurrence of an event specified in section 53(3)(a)(i) of the 1981 Act, namely, the diversion (as authorised by this Order) of a highway hitherto shown or required to be shown in the map and statement.

**BY THIS ORDER:**

1. The Public Footpath over the land shown by a bold black continuous line on the attached Order plans 1 and 2 and described in Part 1 of the Schedule to this Order ('the Schedule') shall be diverted as provided below and the Definitive Map and Statement for Milton Keynes shall be modified.
2. There shall be created to the reasonable satisfaction of the Council of the Borough of Milton Keynes an alternative highway for use as a replacement for the said section of footpath as provided in Part 2 of the Schedule and shown by a bold black dashed line on the attached Order plans 1 and 2.

3. The diversion of the footpath shall have effect on the date on which Milton Keynes Council certifies that the terms of Article 2 above have been complied with and upon the occurrence of that diversion the Definitive map for Milton Keynes shall be modified by deleting from it the path or way referred to in Article 1 of this Order and the path or way referred to in Article 2 of this Order shall be added to it and the definitive statement shall be modified as described in Part 3 of the Schedule.
4. Where immediately before the date on which the footpath is diverted there is apparatus under, in, on, over, along or across it belonging to statutory undertakers for the purpose of carrying on their undertaking, the undertakers shall continue to have the same rights in respect of the apparatus as they then had.

## **SCHEDULE**

### **PART 1**

#### **Description of site of existing path or way**

##### **Existing Public Footpath Moulsoe 2 (Part)**

From point A at OS Grid Reference SP 89134 41619 in a general easterly direction for approximately 180 metres to point B at OS Grid Reference SP 89314 41620, then in a general east south easterly direction for approximately 426 metres to point C at OS Grid Reference SP 89720 41493 then in a general east north easterly direction for approximately 67 metres to point D at OS Grid Reference SP 89784 41511, then in a general east south easterly direction for approximately 398 metres to point E at OS Grid Reference 90173 41428.

This existing footpath has a length of approximately 1071 metres and a width of 1 metre throughout and is indicated by the points stated above on Order plans 1 and 2 by a bold black continuous line.

### **PART 2**

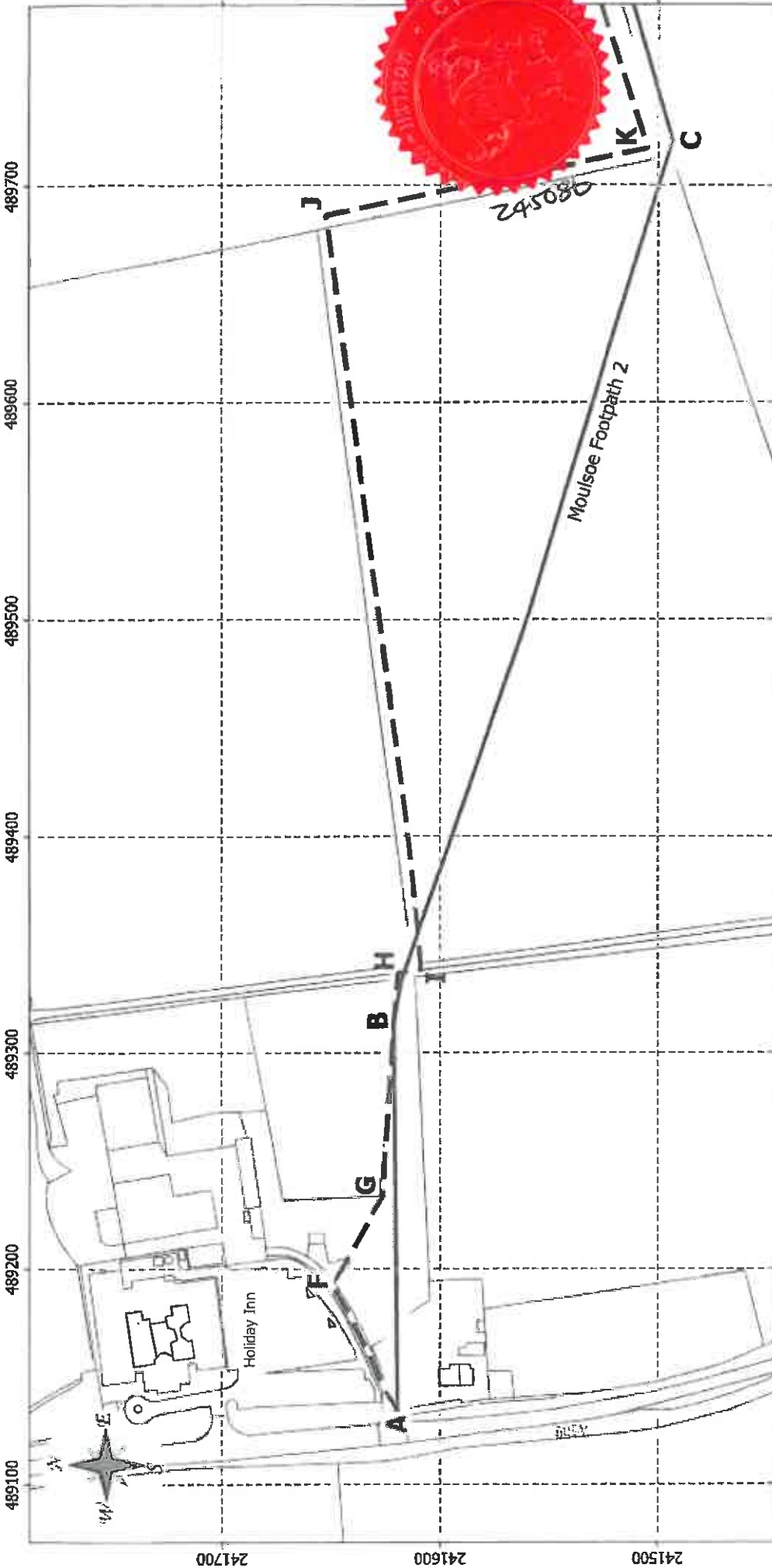
#### **Description of site of alternative highway**

##### **Alternative Public Footpath Moulsoe 2 (Part)**

From point A at OS Grid Reference SP89134 41619 in a general east north easterly direction for approximately 65 metres to point F at OS Grid Reference SP89192 41648, then in a general south easterly direction for approximately 47 metres to point G at OS Grid Reference SP89233 41625, then continuing in a general easterly direction for approximately 103 metres to point H at OS Grid Reference SP89336 41619, then in a general southerly direction for approximately 11 metres to point I at OS Grid Reference SP 89338 41608, continuing in a general easterly direction for approximately 351 metres to point J at OS Grid Reference SP 89686 41651, then in a general south south easterly direction for approximately 150 metres to point K at OS Grid Reference SP 89716 41505, then travelling in a general east north easterly direction for approximately 112 metres to point L at OS Grid Reference SP 89823 41539, then in a north north westerly direction for approximately 26 metres to point M at OS Grid Reference 89814 41564, then in a general north

easterly direction for approximately 19 metres to point N at OS Grid Reference 89831 41571, continuing in a general south easterly direction for approximately 31 metres to point O at OS Grid Reference 89855 41551, then in a north easterly direction for approximately 43 metres to point P at OS Grid Reference SP 89882 41584, then in a general south easterly direction for approximately 71 metres to point Q at OS Grid Reference SP 89940 41543, then travelling in a general north easterly direction for approximately 44 metres to point R at OS Grid Reference SP 89968 41576, then in a general east north easterly direction for approximately 66 metres to point S at OS Grid Reference SP 90031 41598, then in a general south easterly direction for approximately 223 metres to point E at OS Grid Reference 90173 41419.

The alternative footpath will have a length of approximately 1363 metres and a width of 1.8 metres throughout and is indicated by the points stated above on Order plans 1 and 2 by a bold black dashed line.



<b>A-B-C-D-E</b>	Proposed Extinguished
<b>F-G-H-I-J-K-L-M-N-O-P-Q-R-S-E</b>	Proposed Diversion
<b>L-M-N-O-P-Q-R-S-E</b>	Unaffected Public Footpath
<b>L-M-N-O-P-Q-R-S-E</b>	Unaffected Public Bridleway

7.6.2022

Ref:






© Crown copyright and database rights 2022 OS [100019993]

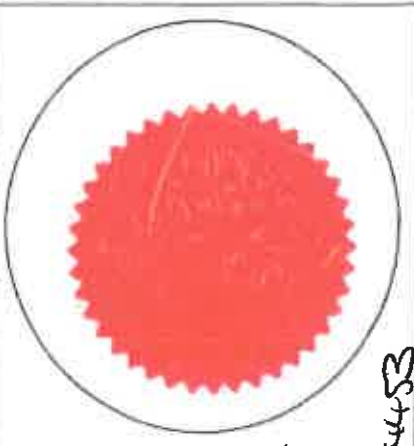
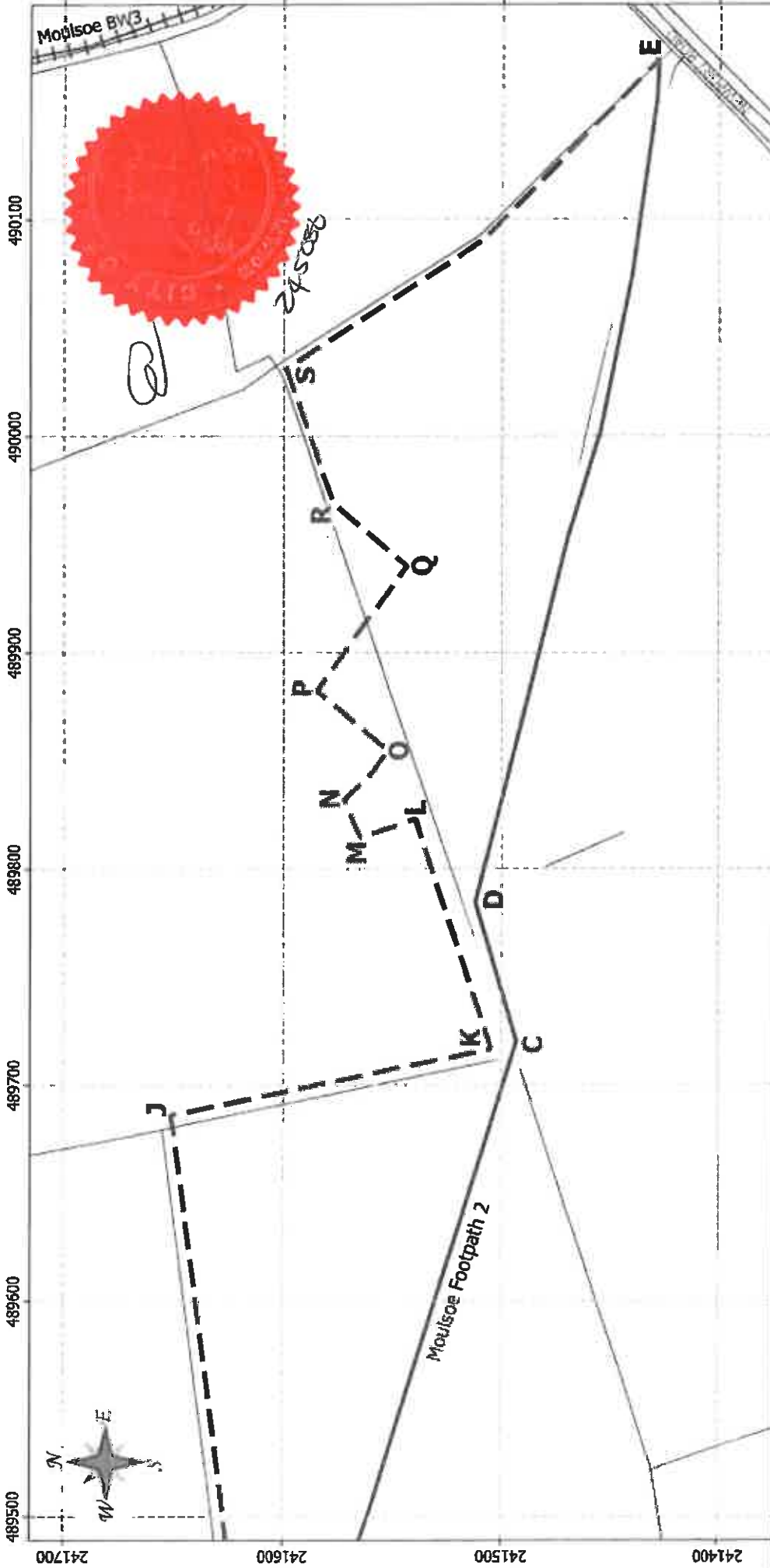
Scale  
1:2,500  
@A4P

Map 1 of 2 referred to in the Council of the Borough of Milton Keynes (Moulsoe Footpath 2 (part)), Public Path Diversion Order 2022

The common seal of the Council of the Borough of Milton Keynes was hereunto affixed in the presence of:

  
 AUTHORISED SIGNATORY Legal  
 CATHERINE STEATENS

  
 244453



Map 2 of 2 referred to in the Council of the Borough of Milton Keynes (Moulsoe Footpath 2 (part)), Public Path Diversion Order 2022

The common seal of the Council of the Borough of Milton Keynes was hereunto affixed in the presence of:

CATHERINE STEPHENS  
 AUTHORISED SIGNATORY Legal

<b>A-B-C-D-E</b> Proposed Extinguished <b>A-F-G-B-H-I-J-K-L-M-N-O-P-Q-R-S-E</b> Proposed Diversion Unaffected Public Footpath Unaffected Public Bridleway	7.6.2022	Scale 1:2,500 @A4P
	Ref:	© Crown copyright and database rights 2022 OS [100019593]

244453

**PART 3**

**Modification of Definitive Statement  
Variation of Particulars of Path or Way**

Moulsoe Footpath 2

**Add:-**

From: SP 89134 41619 To: SP 90173 41419

From junction with the A509 London Road, generally south easterly with deviations for 1363 metres to junction with Newport Road, Moulsoe

Width: 1.8 metres throughout.

**GIVEN under the Common Seal of the  
Council of the Borough of Milton Keynes.**

Dated this 16<sup>th</sup> day of August 2022



.....  
**Authorised Signatory**



244453

Statement

CATHERINE STEPHENS

THIS ORDER WAS CONFIRMED BY THE COUNCIL ON THE  
11<sup>TH</sup> SEPTEMBER 2023 AS AN UNOPPOSED ORDER.



CATHERINE STEPHENS  
Head of Service  
Legal Department



245086

